

# Population and Employment Profile of Mumbai Metropolitan Region

## Role of MMRDA

The MMRDA, established in 1975, under the Mumbai Metropolitan Region Development Authority Act, 1974, for the purpose of planning, co-ordinating and supervising the proper, orderly and rapid development of the areas in MMR, and of executing plans, projects and schemes for such development. This is sought to be achieved through long term planning, promotion of new growth centres, financing infrastructure investments and implementation of infrastructure projects.

## Composition of MMR

|              | Area (sq.km) |
|--------------|--------------|
| Urban :      | 1273         |
| 7 MC         |              |
| 13 Mcl       |              |
| Rural :      | 3082         |
| 950 Villages |              |
| Total :      | 4355         |

## NDP (1998-99) at 1993-94 Prices

|           | MMR   | Gr.Mumbai |
|-----------|-------|-----------|
| Primary   | 1789  | 586       |
| Secondary | 22529 | 13060     |
| Tertiary  | 30376 | 22265     |
| Total     | 54694 | 35911     |

## Population of MMR

| Year | MMR    | Gr.Mumbai |
|------|--------|-----------|
| 1971 | 77.97  | 59.71     |
| 1981 | 110.92 | 82.43     |
| 1991 | 145.34 | 99.26     |
| 2001 | 188.93 | 119.14    |

## Population Share of Gr. Mumbai in MMR

| Year | % Share |
|------|---------|
| 1971 | 76.63   |
| 1981 | 74.31   |
| 1991 | 68.30   |
| 2001 | 63.06   |

## Slum Population in Municipal Urban Area of MMR (2001)

|                   |          |
|-------------------|----------|
| Total Population  | : 177.02 |
| Slum Population   | : 67.20  |
| % Slum Population | : 37.96  |

## Employment and Establishments in MMR(1998)

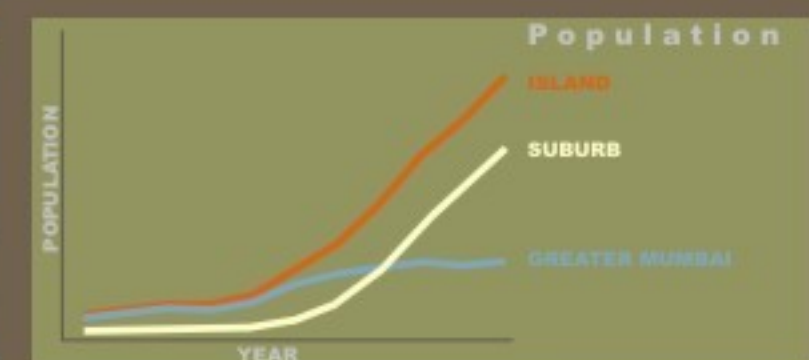
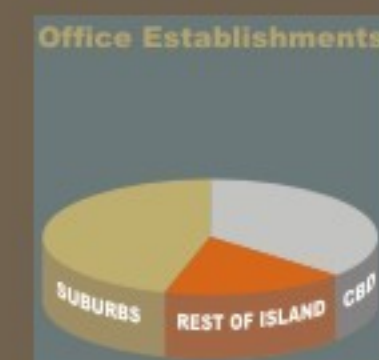
|       | Est. | Emp.  |
|-------|------|-------|
| Urban | 6.68 | 34.51 |
| Rural | 0.30 | 1.09  |
| Total | 6.98 | 35.60 |

## Sectorwise Employment in Gr.Mumbai (1998)

|           |       |
|-----------|-------|
| Primary   | 0.07  |
| Secondary | 4.92  |
| Tertiary  | 21.27 |
| Total     | 26.26 |

## Growth of Offices in Greater Mumbai

| Year | Est.  | Emp.   |
|------|-------|--------|
| 1980 | 23.32 | 352.47 |
| 1990 | 42.38 | 628.82 |
| 1998 | 49.32 | 870.42 |



# POPULATION AND EMPLOYMENT PROFILE OF MUMBAI METROPOLITAN REGION

## CONTENTS

|           | Preface  |         |
|-----------|--|---------|
|           | Population and Employment in MMR : Observations and Trends   |         |
| Table No. | Title  | Page no |
|           | <b>Population</b>  |         |
| 1         | Population Growth of MMR during 1971-2001  | 1       |
| 2         | Spatial Growth Profile of Greater Mumbai   | 3       |
| 3         | Slum Population in Municipal Urban Area of MMR (2001)  | 5       |
| 4         | Population Growth of Greater Mumbai , MMR, Maharashtra and India   | 7       |
| 5         | Comparative Growth of Four Major Urban Agglomerations in India   | 7       |
| 6         | Population Growth of Greater Mumbai over the Last Century  | 9       |
| 7         | Composition of Population of Greater Mumbai  | 11      |
| 8         | Distribution of Sex-ratio of Population in Wards of Greater Mumbai   | 13      |
| 9         | Literate Population of Greater Mumbai  | 15      |
| 10        | Population and Resident Workers in Urban MMR -2001   | 17      |
|           | <b>Employment</b>  |         |
| 11        | Employment in MMR (1998)   | 19      |
| 12        | Growth of Population, Resident Workers and Employment in Greater Mumbai  | 21      |
| 13        | Number of Establishments and Employment in Gr. Mumbai According to<br>NIC Divisions                                  | 23      |
| 14        | Ward-wise Distribution of Establishments and Employment for office sector in<br>Greater Mumbai over 1980-1998 Period | 25      |
| 15        | Distribution of Establishments by Employment Size-Class in MMR (1998)  | 29      |
| 16        | Size-wise Office Sector Employment in Greater Mumbai (1998)  | 31      |
| 17        | Change in Office Sector Employment in Greater Mumbai 1990-1998   | 33      |
| 18        | Employment in Agriculture Establishments in MMR (1998)   | 35      |
| 19        | Employment and Establishments by Nature of Operation in MMR (1998)   | 37      |
| 20        | Employment and Establishments with Premises Status in MMR (1998)   | 39      |
| 21        | Employment and Establishments by Type of Power Fuel Used in MMR (1998)   | 41      |
| 22        | Employment and Establishments by Type of Ownership in MMR (1998)   | 43      |
| 23        | Employment and Establishments by Number of Years of Operation in MMR (1998)  | 45      |
| 24        | Employment and Establishments by Social Groups in MMR (1998)   | 47      |
| 25        | Ward-wise Population, Establishments and Employment of Greater Mumbai  | 49      |
| 26        | Rural Total Workers in Thane District in MMR (1998)  | 51      |
| 27        | Rural Hired Workers in Thane District in MMR (1998)  | 51      |
| 28        | Rural Total Workers in Raigad District in MMR (1998)   | 53      |
| 29        | Rural Hired Workers in Raigad District in MMR (1998)   | 53      |
| 30        | Distribution of Total Workers in Greater Mumbai, Thane, Raigad (1998)  | 55      |
| 31        | Distribution of Hired Workers in Greater Mumbai, Thane, Raigad (1998)  | 55      |
| 32        | Sectorwise Net District Domestic Product at Constant (1993-94) Prices for MMR  | 57      |

## PREFACE

Population and employment by place-of-work are the two key parameters necessary for planning of infrastructure and other activities. The Mumbai Metropolitan Region as defined by the Mumbai Metropolitan Region Development Authority Act 1974, covers full Districts of Mumbai City and Mumbai Suburbs and part of the Districts of Thane and Raigad. It is a highly urbanised area with 13 Municipal Councils, 7 Municipal Corporations and a few non-municipal towns. In addition, there are more than 900 villages in this region. Considerable changes in the growth and distribution of population and employment are observed in the Region over the last couple of decades.

In this publication an attempt is made to present population and employment in various administrative units of the Mumbai Metropolitan Region. Provisional figures released by Census 2001 and data obtained from Economic Census 1998 are the main sources. Data have been compiled in various tables to reflect the status. A comparison with available data for previous years is made wherever found useful. Observations to highlight the tabulated information are given at suitable places. The population data, in particular, would be revised once the final figures are available for Census 2001.

Suggestions are solicited to improve and expand this publication to serve the wider community.

September 1, 2003  
Mumbai

S.P. Pendharkar  
Chief, Planning Division

## **Population and Employment in MMR :**

### **Observations and Trends**

#### **Introduction**

Development of the hinterland surrounding Greater Mumbai was considered necessary by the Government of Maharashtra, in the light of the rapid growth of population observed in 1960s. With this view, delineation of Mumbai Metropolitan Region (MMR), which includes area of Navi Mumbai across Thane Creek and undertaking preparation of the Regional Plan 1970-91, were the actions taken in early 1970s. Following the sanctioning of the Regional Plan for MMR in 1973, the Mumbai Metropolitan Region Development Authority (MMRDA) was established to co-ordinate and implement the development of the MMR in accordance with the Regional Plan. In 1971, City and Industrial Development Corporation (CIDCO), was established to plan and develop Navi Mumbai with target population of 2 million. Decentralisation of economic activities and population by developing other parts of the Mumbai Metropolitan Region were the main planks of that strategy. On this background it would be useful to study the trends in population and employment as per the data available from the General Census 2001 and Economic Census 1998 that are tabulated in the following pages.

#### **Population Growth in MMR**

It is seen from Table-1 that, population of MMR has increased from 77.92 lakhs in 1971 to 188.90 lakhs in the year 2001. However the annual compound growth rate for population in MMR has declined from 3.59% during 1971-81 to 2.66% in 1991-2001. It is further seen that MMR is a highly urbanised area where growth in urban population is around 3% during 1971-2001 period, whereas rural population has remained stagnant. Rural population decline is also accounted by incorporation of several villages in the surrounding respective Municipal Corporation or Municipal Council area in the last three decades.

It may be observed from Table-1 that though there is a continuous growth of population of Greater Mumbai in absolute number, the annual compound growth rate has drastically reduced from that of 3.28% during 1971-81 to 1.84% in 1991-2001. On the other hand Municipal Corporations of Thane, Kalyan-Dombivali, Bhiwandi-Nizampur, Mira-Bhayandar and Navi Mumbai have registered substantial growth in their population, particularly during 1981-2001 period. The share of Greater Mumbai's population in that of MMR, which was 76.63% in the year 1971 is found reduced to 63.06% in 2001. This indicates that the growth of population in outer MMR has taken place at faster pace than that in Greater Mumbai.

#### **Population Distribution within Greater Mumbai**

Within Greater Mumbai a distinct change in the spatial distribution of population is observed in the last quarter of the 20<sup>th</sup> century (Table-6). Over 1901-1971 period, the population in island-city is found steadily increasing and was always more than that in the suburbs in that period. However, during the last three decades population growth in island city is found negligible, whereas, that in the suburbs is increasing at fairly high rate. In the suburbs it is observed that the western suburbs (wards H, K, P & R) have more population than that residing in eastern suburbs (wards L, M, N, S & T). Gross density of Greater Mumbai is naturally increasing and is found to be 27,715 persons per sq. km. in 2001 (Table-2). The highest density of 107,723 is found in 'C' ward.

It is seen from Table-7 that there has been a gradual improvement in the sex ratio over 1901 to 2001 period in Greater Mumbai. That is an indication of the increasing female migration along with the male migration over the years. However Greater Mumbai fares badly in the sex ratio when compared to that of India all through the last century. It is heartening to note that literacy rate for both male and female is increasing in Greater Mumbai since 1981. The proportion of the literate population in the total population, which was 68.16% in 1981 has increased to 77.45% in 2001 (Table-9). Availability of educational facilities and realisation of the importance of education by the people in Greater Mumbai may be the reasons.

### **Slum Population**

Proliferation of slums is a bane of urbanisation. The MMR, which is a highly urbanised region, is not free from it. This is brought out in Table-3. It is seen that approximately half of the population of Greater Mumbai in 2001 is found living in slums (48.88 %). Similarly one third of the population in Thane Municipal Corporation is found living in slums. More than 38% of the urban population in MMR in 2001 is found to be residing in slums. This brings out pressing need for improving the affordable housing stock supply in most of the urban settlements of MMR.

### **Resident Workers and Employment**

Census gives information about the resident workers classified as main and marginal workers. In Table-10 distribution of resident workers in urban MMR in 2001 is presented. It is seen that out of total population of 178.46 lakhs in urban MMR, the total resident workers were 66.16 lakhs in the year 2001 i.e. 37.07%. In case of Greater Mumbai, share of total resident worker in its total population, which was 36.81% in the year 1971 has varied over the years namely, to 34.69% in 1981, 34.59% in 1991 and 38.00% in 2001.

Employment is one important indicator of the economic growth. For this purpose data from Economic Census is found relevant. Economic census gives the status of employment in a town or village because data on employees are collected at the workplace unlike the general census, which collects data at the residence. Overall picture of employment in MMR in 1998 when the last Economic Census was conducted is given in Table-11. The total employment in MMR has increased from 28.08 lakh in 1980 to 32.22 lakh in 1990 and to 35.54 lakh in 1998. It is thus seen that the employment has registered a modest growth rate of 1.23% during 1980-90 period and 1.38% during 1990-98 period. The total employment in Greater Mumbai is found increasing marginally since 1980. This can be seen from the fact that employment in Greater Mumbai, which was 15.28 lakh in 1971, increased to 21.99 lakh in 1980, 24.26 lakh in 1990 and 26.26 lakh in 1998. The compound growth rate of employment was 3.71 % during 1971-80, which has remained constant at about 1% during both 1980-90 and 1990-1998 period (Table-12). It is seen from Table-13 that there is a substantial increase in number of establishments as well as employment in finance, banking and personal service sector in Greater Mumbai over 1980-1998 period. However increase in total number of establishments during 1990-98 period is found marginal.

### **Employment in Wholesale Trade**

It may be noted that there has been a decline both in number of establishments and employment in wholesale trade sector over the 1990-98 period. This is seen from the fact that number of establishments in the wholesale trade sector has reduced from 26,986 in 1990 to



24,639 in 1998 and employment from 1,51,219 to 1,18,925 during this period. This may partly be on account of implementing the policy of shifting of some of the wholesale trade activities from Mumbai to Navi Mumbai. The retail trade sector however shows the growth in number of establishments and employment during 1990-98 period. The number of establishments in retail trade sector has increased from 1,71,017 to 2,28,545 and employment has increased from 4,39,032 to 4,98,819 over the 1990-98 period.

### **Office Sector Employment**

Employment in office sector in Greater Mumbai with its distribution across the wards for 1980-98 period is given in Table-14. It is noted that share of office sector employment in its Central Business District (wards A, B, C, and D) has decreased from 54% to 47% in the total office sector employment during 1980-98 period. The employment in the rest of island-city has substantially increased in absolute number namely from 70,435 in 1980 to 2,03,583 in 1998. Distribution of establishments by size class of employment in MMR in 1998 shows that in Greater Mumbai employment in large establishments (employing more than 50 persons), constitutes 41% of its total employment. In MMR the employment is found equally divided in establishments employing less than 20 persons and the rest of the categories (Table-15). Average of 20 employees per office is observed in Greater Mumbai in 1998 (Table-16). It may be noted that there are 180 offices in Greater Mumbai in 1998 employing more than 500 employees per office. These offices are confined largely to banking and allied activities (NIC code 80 & 81) and public administration and defence services (NIC code 90). Employment in the offices of professional and labour organisation (NIC code 94), recreational and cultural services (NIC code 95), international and extra territorial bodies (NIC code 99) has declined but there is a steady growth in rest of the office sectors over the period 1990-98 (Table 17).

### **Nature of Employment in MMR**

It is observed that in 1998 more than 97% of the total establishments in MMR are perennial in nature and 86 % of the total operate from premises (Table 19 & 20). Further, 75 % of the establishments operate without power, while 15 % use electricity (Table 21). Out of the total establishments in MMR, 97 % are in private sector employing 71% of the total employment. About 2% establishments are in Government sector, employing 26% of the total employment. On an average a private sector establishment employs 4 persons, while Government sector establishment employs 64 persons (Table 22). It is found that 58% of the total establishments in MMR are in operation for more than 6 years (Table 23). It is observed that the employment in Raigad district in MMR is just about 1 lakh, whereas that in Thane District is 8.2 lakhs (Table 30). From the analysis of the data available from Census 2001 and Economic Census 1998 it is found that though the rate of growth for population in Greater Mumbai is reduced, addition of population in absolute number (about 2 million) during the decade 1991-2001 is still very substantial. Growth of population in the rest of urban MMR is also significant. Provision of infrastructure and services in Greater Mumbai and the rest of urban settlements is therefore needed on sustained basis. Growth of employment in Greater Mumbai as well as rest of MMR is not increasing at a desired pace and efforts to create more job opportunities in formal sector will have to be stepped up.

**Table 1 : Population Growth of MMR during 1971 - 2001**

| Sr. no   | Unit                         | 1971             | 1981              | 1991              | 2001                 | Annual Comp.Gr. rate |              |              |
|----------|------------------------------|------------------|-------------------|-------------------|----------------------|----------------------|--------------|--------------|
|          |                              |                  |                   |                   |                      | 1971-1981            | 1981-1991    | 1991-2001    |
| <b>A</b> | <b>Municipal Corporation</b> |                  |                   |                   |                      |                      |              |              |
| 1        | Greater Mumbai               | 5,970,575        | 8,243,405         | 9,925,891         | 11,914,398           | 3.28                 | 1.87         | 1.84         |
| 2        | Thane                        | 170,675          | 474,366           | 803,389           | 1,261,517            | 10.76                | 5.41         | 4.62         |
| 3        | Kalyan-Dombivali             | 150,655          | 578,353           | 820,089           | 1,193,266            | 14.40                | 3.55         | 3.82         |
| 4        | Navi Mumbai                  | +                | +                 | 318,447           | 703,947              |                      |              | 8.26         |
| 5        | Mira Bhayander               | +                | +                 | 175,605           | 520,301              |                      |              | 11.47        |
| 6        | Bhiwandi-Nizampur            | 79,576           | 115,298           | 379,070           | 598,703              | 3.78                 | 12.64        | 4.68         |
| 7        | Ulhasnagar                   | 168,462          | 273,668           | 369,077           | 472,943              | 4.97                 | 3.04         | 2.51         |
|          | Sub-total (A)                | <b>6,539,943</b> | <b>9,685,090</b>  | <b>12,791,568</b> | <b>16,665,075</b>    | <b>4.00</b>          | <b>2.82</b>  | <b>2.68</b>  |
| <b>B</b> | <b>Municipal Council</b>     |                  |                   |                   |                      |                      |              |              |
|          | <b>Thane District</b>        |                  |                   |                   |                      |                      |              |              |
| 1        | Ambernath                    | 56,276           |                   | 125,801           | 203,795              |                      |              | 4.94         |
| 2        | Kulgaon-Badlapur             | +                | +                 | 52,154            | 97,917               |                      |              | 6.50         |
| 3        | Nallasopara                  | +                | +                 | 67,732            | 184,664              |                      |              | 10.55        |
| 4        | Vasai                        | 30,594           | 34,940            | 39,781            | 49,346               | 1.34                 | 1.31         | 2.18         |
| 5        | Virar                        | +                | +                 | 57,600            | 118,945              |                      |              | 7.52         |
| 6        | Navghar Manikpur             | +                | +                 | 59,324            | 116,700              |                      |              | 7.00         |
|          | Sub-total (B)                | <b>86,870</b>    | <b>34,940</b>     | <b>402,392</b>    | <b>771,367</b>       | <b>-8.71</b>         | <b>27.68</b> | <b>6.72</b>  |
|          | <b>Raigad District</b>       |                  |                   |                   |                      |                      |              |              |
| 7        | Alibag                       | 11,913           | 14,051            | 16,289            | 19,491               | 1.66                 | 1.49         | 1.81         |
| 8        | Karjat                       | +                | +                 | 19,904            | 25,544               |                      |              | 2.53         |
| 9        | Khopoli                      | 18,152           | 32,102            | 45,039            | 58,657               | 5.87                 | 3.44         | 2.68         |
| 10       | Matheran                     | 3,397            | 3,920             | 4,708             | 5,139                | 1.44                 | 1.85         | 0.88         |
| 11       | Panvel                       | 26,602           | 37,073            | 58,986            | 104,031              | 3.37                 | 4.75         | 5.84         |
| 12       | Pen                          | 11,754           | 14,772            | 21,588            | 30,203               | 2.31                 | 3.87         | 3.42         |
| 13       | Uran                         | 12,616           | 15,168            | 17,775            | 23,254               | 1.86                 | 1.60         | 2.72         |
|          | Sub-total (C)                | <b>84,434</b>    | <b>117,086</b>    | <b>184,289</b>    | <b>266,319</b>       | <b>3.32</b>          | <b>4.64</b>  | <b>3.75</b>  |
| <b>C</b> | <b>Urban MMR (A+B+C)</b>     | <b>6,711,247</b> | <b>9,837,116</b>  | <b>13,378,249</b> | <b>17,845,935</b> #  | <b>3.90</b>          | <b>3.12</b>  | <b>2.92</b>  |
| <b>D</b> | <b>Rural MMR</b>             | <b>1,080,341</b> | <b>1,254,676</b>  | <b>1,156,115</b>  | <b>1,047,124</b> \$  | <b>1.51</b>          | <b>-0.81</b> | <b>-0.99</b> |
| <b>E</b> | <b>Grand Total</b>           | <b>7,791,588</b> | <b>11,091,792</b> | <b>14,534,364</b> | <b>18,893,059</b> \$ | <b>3.59</b>          | <b>2.74</b>  | <b>2.66</b>  |

*Includes population of non-municipal Census towns of Sandor, Khoni, Kopharad, Gokhiware, Waliv, Kon, # Kegaon, Taloje Panchnand, Kalundre, Ambivali Tarf Wankhal, Mohpada alias Wasambe, Nera*

\$ Estimated

+ Included in Rural MMR

**Table 2 : Spatial Growth Profile of Greater Mumbai**

| Wards                  | Area (Sq.Kms.) | Population ('000) |                |                |                 | Gross Density (Persons /Sq.km) |               |               |               |
|------------------------|----------------|-------------------|----------------|----------------|-----------------|--------------------------------|---------------|---------------|---------------|
|                        |                | 1971              | 1981           | 1991           | 2001            | 1971                           | 1981          | 1991          | 2001          |
| A                      | 10.46          | 184.10            | 168.22         | 194.84         | 207.51          | 17,600                         | 16,082        | 18,627        | 19,838        |
| B                      | 2.44           | 175.13            | 147.31         | 117.73         | 140.48          | 71,775                         | 60,373        | 48,250        | 57,574        |
| C                      | 1.77           | 312.47            | 270.70         | 197.22         | 190.67          | 176,537                        | 152,938       | 111,424       | 107,723       |
| D                      | 6.62           | 382.74            | 384.04         | 344.88         | 378.61          | 57,816                         | 58,012        | 52,097        | 57,192        |
| E                      | 7.38           | 528.74            | 517.07         | 467.50         | 439.39          | 71,645                         | 70,064        | 63,347        | 59,538        |
| F                      | 21.15          | 662.52            | 814.70         | 847.83         | 922.47          | 31,325                         | 38,520        | 40,087        | 43,616        |
| G                      | 17.85          | 824.68            | 983.00         | 1004.91        | 1047.71         | 46,201                         | 55,070        | 56,297        | 58,695        |
| <b>Mumbai Island</b>   | <b>67.67</b>   | <b>3070.38</b>    | <b>3285.04</b> | <b>3174.91</b> | <b>3326.84</b>  | <b>45,373</b>                  | <b>48,545</b> | <b>46,918</b> | <b>49,163</b> |
| H                      | 19.56          | 523.63            | 706.84         | 798.74         | 915.17          | 26,770                         | 36,137        | 40,835        | 46,788        |
| K                      | 47.23          | 573.69            | 925.68         | 1242.68        | 1500.51         | 12,147                         | 19,599        | 26,311        | 31,770        |
| P                      | 63.67          | 372.34            | 663.73         | 928.69         | 1226.56         | 5,848                          | 10,425        | 14,586        | 19,264        |
| R                      | 76.64          | 235.83            | 561.92         | 977.88         | 1453.44         | 3,077                          | 7,332         | 12,759        | 18,965        |
| <b>Western Suburbs</b> | <b>207.10</b>  | <b>1705.49</b>    | <b>2858.17</b> | <b>3947.99</b> | <b>5095.68</b>  | <b>8,235</b>                   | <b>13,801</b> | <b>19,063</b> | <b>24,605</b> |
| L                      | 13.30          | 273.51            | 434.02         | 616.6          | 774.81          | 20,565                         | 32,633        | 46,361        | 58,256        |
| M                      | 54.28          | 316.37            | 565.77         | 822.91         | 1080.85         | 5,828                          | 10,423        | 15,160        | 19,912        |
| N                      | 53.09          | 347.49            | 599.42         | 686.76         | 614.95          | 6,545                          | 11,291        | 12,936        | 11,583        |
| S                      | 15.97          | 132.17            | 278.46         | 373.50         | 691.11          | 8,276                          | 17,436        | 23,388        | 43,276        |
| T                      | 34.45          | 125.17            | 222.55         | 303.26         | 330.17          | 3,633                          | 6,460         | 8,803         | 9,584         |
| <b>Eastern Suburbs</b> | <b>171.09</b>  | <b>1194.71</b>    | <b>2100.22</b> | <b>2803.03</b> | <b>3491.89</b>  | <b>6,983</b>                   | <b>12,276</b> | <b>16,383</b> | <b>20,410</b> |
| <b>Greater Mumbai</b>  | <b>445.86</b>  | <b>5970.58</b>    | <b>8243.43</b> | <b>9925.93</b> | <b>11914.41</b> | <b>13,391</b>                  | <b>18,489</b> | <b>22,262</b> | <b>26,722</b> |

**Observations :**

- (1) Population of the Island part of Greater Mumbai is relatively stabilised
- (2) Gross density of the Western and Eastern Suburbs has registered three fold increase over 1971-2001 period
- (3) Gross density of Greater Mumbai has doubled over 1971-2001 period.



**Table 3 : Slum Population in Municipal Urban Area of MMR (2001)**

(Population in '000)

| Sr. No | Urban Area (Mun.Corpns/Councils) | Slum Population | Total Population | Percentage of slum population |
|--------|----------------------------------|-----------------|------------------|-------------------------------|
| 1      | Greater Mumbai                   | 5823.51         | 11914.40         | 48.88                         |
| 2      | Thane                            | 420.27          | 1261.52          | 33.31                         |
| 3      | Kalyan-Dombivali                 | 34.85           | 1193.27          | 2.92                          |
| 4      | Navi Mumbai                      | 138.62          | 703.95           | 19.69                         |
| 5      | Bhiwandi                         | 111.30          | 598.70           | 18.59                         |
| 6      | Mira Bhayander                   | 37.24           | 520.30           | 7.16                          |
| 7      | Ulhasnagar                       | 53.72           | 472.94           | 11.36                         |
| 8      | Ambarnath                        | 64.19           | 203.80           | 31.50                         |
| 9      | Nallasopara                      | 3.17            | 184.66           | 1.72                          |
| 10     | Virar                            | 18.1            | 118.95           | 15.22                         |
| 11     | Navghar Manikpur                 | NA              | 116.70           |                               |
| 12     | Panvel                           | 7.54            | 104.03           | 7.25                          |
| 13     | Kulgaon-Badlapur                 | 7.67            | 97.92            | 7.83                          |
| 14     | Khopoli                          | NA              | 58.66            |                               |
| 15     | Vasai                            | NA              | 49.34            |                               |
| 16     | Pen                              | NA              | 30.20            |                               |
| 17     | Karjat                           | NA              | 25.54            |                               |
| 18     | Uran                             | NA              | 23.25            |                               |
| 19     | Alibag                           | NA              | 19.49            |                               |
| 20     | Matheran                         | NA              | 5.14             |                               |
|        | Total                            | 6720.18         | 17702.76         | 37.96                         |

**Observations :**

- (1) About half of the population in Greater Mumbai lives in slums
- (2) One third of the population in Thane Municipal Corporation area is living in slums
- (3) Among the Municipal Councils , more than 30% of population of Ambarnath Municipal Council lives in slums .
- (4) More than one third population of Urban MMR lives in slums.

**Table 4: Population Growth of Greater Mumbai, MMR, Maharashtra and India**

(Population in lakhs)

| Unit           | 1971    | 1981    | 1991    | 2001     |
|----------------|---------|---------|---------|----------|
| Greater Mumbai | 59.71   | 82.43   | 99.26   | 119.14   |
| MMR            | 77.78   | 110.78  | 145.34  | 188.93   |
| Maharashtra    | 504.12  | 627.15  | 789.21  | 967.52   |
| Urban India    | 1091.13 | 1594.63 | 2175.52 | 2853.55  |
| India          | 5481.60 | 6851.85 | 8443.24 | 10270.15 |

**Observations :**

- (1) Share of population of Greater Mumbai in that of MMR is reduced from 77 % in 1971 to 63% in 2001.
- (2) Share of population of MMR in Maharashtra is increased from 15 % in 1971 to 20% in 2001
- (3) Share of population of MMR in urban India has remained 7% over 1971-2001 period.

**Table 5: Comparative Growth of Four Major Urban Agglomerations in India**

(Population in lakhs)

| Urban Agglomerations | 1971  | 1981  | 1991   | 2001   |
|----------------------|-------|-------|--------|--------|
| Gr.Mumbai *          | 65.92 | 94.22 | 125.72 | 163.68 |
| Delhi                | 36.47 | 57.29 | 83.75  | 127.91 |
| Kolkatta             | 74.20 | 91.94 | 109.10 | 132.17 |
| Chennai              | 31.70 | 42.89 | 53.61  | 64.24  |

\* Covers Municipal Corporations of Greater Mumbai, Thane , Kalyan-Dombivali, Navi Mumbai, Bhiwandi, Mira-Bhayander and Ulhas Nagar

**Observation :**

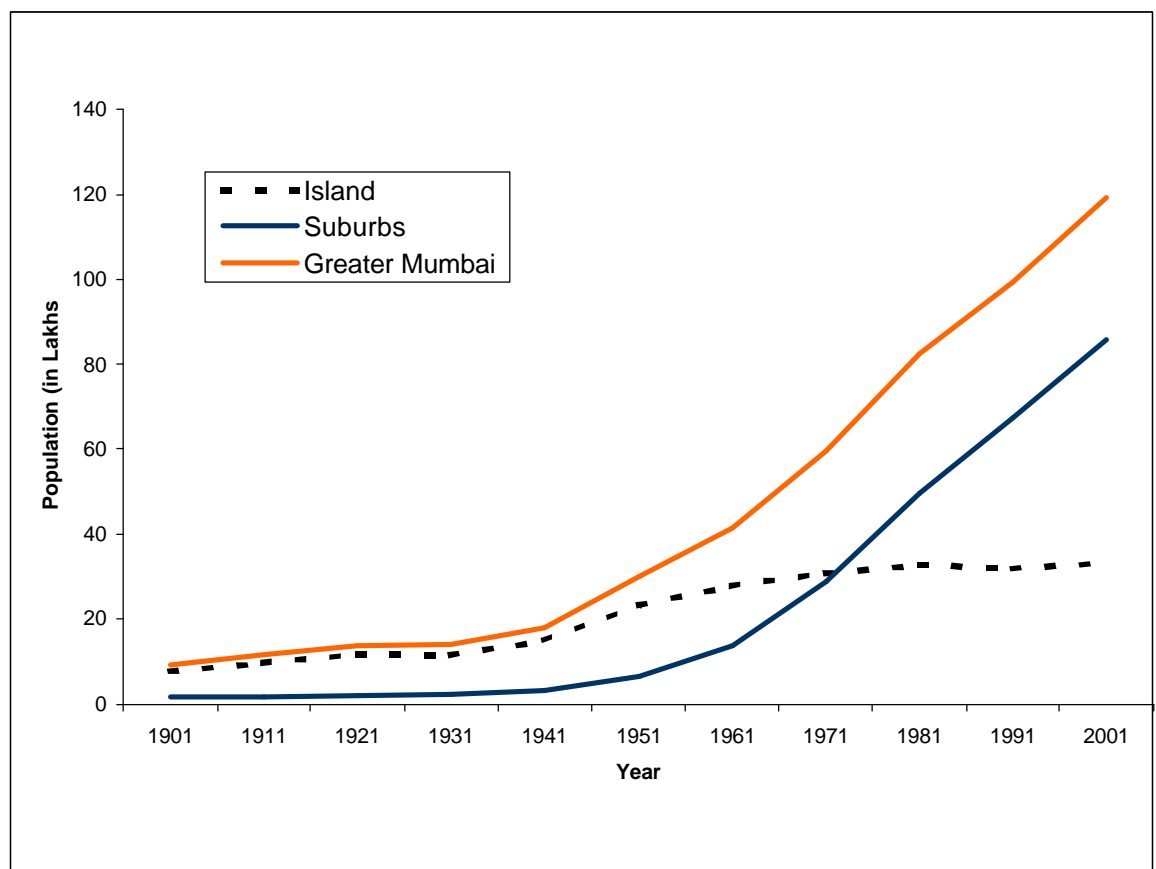
Greater Mumbai Urban Agglomeration is the largest in terms of population among four major Urban Agglomerations in India since 1981

**Table 6: Population Growth of Greater Mumbai over the Last Century**

(Population in lakhs)

| Year | Island Population | Comp. Grwth rate | Suburbs population | Comp. Growth rate | Total population | Comp. Growth rate |
|------|-------------------|------------------|--------------------|-------------------|------------------|-------------------|
| 1901 | 7.76              |                  | 1.52               |                   | 9.28             |                   |
| 1911 | 9.79              | 2.36%            | 1.69               | <b>1.09%</b>      | 11.49            | 2.16%             |
| 1921 | 11.76             | 1.84%            | 2.05               | <b>1.91%</b>      | 13.80            | 1.85%             |
| 1931 | 11.61             | -0.12%           | 2.36               | <b>1.46%</b>      | 13.98            | 0.13%             |
| 1941 | 14.90             | 2.52%            | 3.11               | <b>2.79%</b>      | 18.01            | 2.57%             |
| 1951 | 23.29             | 4.57%            | 6.65               | <b>7.89%</b>      | 29.94            | 5.21%             |
| 1961 | 27.72             | 1.76%            | 13.80              | <b>7.57%</b>      | 41.52            | 3.32%             |
| 1971 | 30.70             | 1.03%            | 29.00              | <b>7.71%</b>      | 59.71            | 3.70%             |
| 1981 | 32.85             | 0.68%            | 49.58              | <b>5.51%</b>      | 82.43            | 3.28%             |
| 1991 | 31.75             | -0.34%           | 67.51              | <b>3.13%</b>      | 99.26            | 1.87%             |
| 2001 | 33.27             | 0.47%            | 85.88              | <b>2.44%</b>      | 119.14           | 1.84%             |

**Greater Mumbai Population (1901-2001)**



**Table 7 : Composition of Population of Greater Mumbai**

| Year | Males     | Females   | Total      | Sex Ratio (females/<br>'000 males) Gr.<br>Mumbai | Sex Ratio<br>(females/<br>'000 males) India |
|------|-----------|-----------|------------|--|---|
| 1901 | 561,825   | 366,169   | 927,994    | 652  | 972   |
| 1911 | 731,634   | 417,123   | 1,148,757  | 570  | 964   |
| 1921 | 884,301   | 496,147   | 1,380,448  | 561  | 955   |
| 1931 | 878,102   | 519,710   | 1,397,812  | 592  | 950   |
| 1941 | 1,114,983 | 686,373   | 1,801,356  | 616  | 945   |
| 1951 | 1,868,335 | 1,125,109 | 2,993,444  | 602  | 946   |
| 1961 | 2,496,176 | 1,655,880 | 4,152,056  | 663  | 941   |
| 1971 | 3,478,378 | 2,492,197 | 5,970,575  | 716  | 930   |
| 1981 | 4,652,646 | 3,590,759 | 8,243,405  | 772  | 934   |
| 1991 | 5,460,145 | 4,465,746 | 9,925,891  | 818  | 927   |
| 2001 | 6,577,902 | 5,336,496 | 11,914,398 | 811  | 933   |

**Observations :**

(1) There has been a gradual improvement in Sex ratio for Greater Mumbai.

(2) The sex ratio of Greater Mumbai has remained inferior to that of India throughout the last century.

**Table 8 : Distribution of Sex-ratio of Population in Wards of Greater Mumbai**

| Ward              | Name            | 1981       | 1991       | 2001       |
|-------------------|-----------------|------------|------------|------------|
| A                 | Colaba          | 721        | 761        | 756        |
| B                 | Sandhurst Rd    | 723        | 813        | 736        |
| C                 | Marine Lines    | 659        | 732        | 579        |
| D                 | Grant Road      | 810        | 866        | 866        |
| E                 | Byculla         | 681        | 776        | 733        |
| F/S               | Parel           | 720        | 769        | 839        |
| F/N               | Matunga         | 800        | 819        | 789        |
| G/N               | Dadar/Plaza     | 795        | 822        | 791        |
| G/S               | Elphinstone     | 663        | 734        | 762        |
| <b>Island</b>     |                 | <b>729</b> | <b>791</b> | <b>774</b> |
| H/W               | Bandra          | 920        | 912        | 895        |
| H/E               | Khar- Santacruz | 797        | 817        | 800        |
| K/W               | Andheri-W       | 845        | 872        | 863        |
| K/E               | Andheri-E       | 779        | 832        | 839        |
| P/S               | Goregaon        | 785        | 815        | 792        |
| P/N               | Malad           | 812        | 818        | 824        |
| R/S               | Kandivli        | 794        | 783        | 761        |
| R/N               | Borivali        | 807        | 859        | 859        |
| L                 | Kurla           | 733        | 767        | 758        |
| M/E               | Chembur-E       | 831        | 812        | 802        |
| M/W               | Chembur-W       | 784        | 840        | 841        |
| N                 | Ghatkopar       | 812        | 849        | 851        |
| S                 | Bhandup         | 740        | 813        | 823        |
| T                 | Mulund          | 853        | 888        | 893        |
| <b>Suburbs</b>    |                 | <b>801</b> | <b>831</b> | <b>826</b> |
| <b>Gr. Mumbai</b> |                 | <b>772</b> | <b>818</b> | <b>811</b> |

**Observations:**

- (1) The sex ratio of Greater Mumbai declined from the figure of 818 females to 1000 males in 1991 to the corresponding figure of 811 females in 2001
- (2) The sex-ratio of the Suburbs is greater than Island city over 1981-2001 period

**Table 9 : Literate Population of Greater Mumbai**

| Year | Population |           |            | Literate Population |           |           | Literacy Rate |             |              |
|------|------------|-----------|------------|---------------------|-----------|-----------|---------------|-------------|--------------|
|      | Males      | Females   | Total      | Males               | Females   | Total     | Males         | Females     | Total        |
| 1    | 2          | 3         | 4          | 5                   | 6         | 7         | (8)=(5)/(2)   | (9)=(6)/(3) | (10)=(7)/(4) |
| 1981 | 4,652,646  | 3,590,759 | 8,245,386  | 3,438,771           | 2,181,386 | 5,620,157 | 73.91         | 60.75       | 68.16        |
| 1991 | 5,460,095  | 4,465,746 | 9,927,832  | 4,183,991           | 2,890,937 | 7,074,928 | 76.63         | 64.74       | 71.26        |
| 2001 | 6,577,902  | 5,336,496 | 11,916,399 | 5,412,674           | 3,816,053 | 9,228,727 | 82.29         | 71.51       | 77.45        |

**Observations :**

- (1) Total literacy rate of Greater Mumbai has gradually increased between 1981-2001
- (2) As compared to literacy rate of 67% of Maharashtra in 2001 the literacy rate for Greater Mumbai is 77 %
- (3) Male and female literacy rate has gradually increased during 1981-2001 in Greater Mumbai

**Table 10 : Population and Resident Workers in Urban MMR - 2001**

| Sr. No.  | Unit                         | Total Population  | Main Workers     | Marginal Workers | Total Workers    |
|----------|------------------------------|-------------------|------------------|------------------|------------------|
| <b>A</b> | <b>Municipal Corporation</b> |                   |                  |                  |                  |
| 1        | Greater Mumbai               | 11,914,398        | 4,272,902        | 255,024          | 4,527,926        |
| 2        | Thane                        | 1,261,517         | 393,413          | 25,891           | 419,304          |
| 3        | Ulhasnagar                   | 472,943           | 145,721          | 9,447            | 155,168          |
| 4        | Kalyan-Dombivali             | 1,193,266         | 381,702          | 21,735           | 403,437          |
| 5        | Mira-Bhayander               | 520,301           | 185,979          | 7,101            | 193,080          |
| 6        | Bhiwandi-Nizampur            | 598,703           | 243,073          | 6,990            | 250,063          |
| 7        | Navi Mumbai                  | 703,947           | 238,259          | 17,196           | 255,455          |
|          | Sub-Total (A)                | <b>16,665,075</b> | <b>5,861,049</b> | <b>343,384</b>   | <b>6,204,433</b> |
| <b>B</b> | <b>Municipal Council</b>     |                   |                  |                  |                  |
|          | <b>Thane District</b>        |                   |                  |                  |                  |
| 8        | Ambernath                    | 203,795           | 59,605           | 6,934            | 66,539           |
| 9        | Kulgaon-Badlapur             | 97,917            | 32,129           | 1,860            | 33,989           |
| 10       | Nallasopara                  | 184,664           | 60,416           | 3,637            | 64,053           |
| 11       | Vasai                        | 49,346            | 15,494           | 1,264            | 16,758           |
| 12       | Virar                        | 118,945           | 40,352           | 3,369            | 43,721           |
| 13       | Navghar Manikpur             | 116,700           | 41,364           | 1,163            | 42,527           |
|          | Sub-Total (B)                | <b>771,367</b>    | <b>249,360</b>   | <b>18,227</b>    | <b>267,587</b>   |
|          | <b>Raigad district</b>       |                   |                  |                  |                  |
| 14       | Alibag                       | 19,491            | 6,640            | 679              | 7,319            |
| 15       | Karjat                       | 25,544            | 7,230            | 1,113            | 8,343            |
| 16       | Khopoli                      | 58,657            | 16,156           | 2,462            | 18,618           |
| 17       | Matheran                     | 5,139             | 2,050            | 297              | 2,347            |
| 18       | Panvel                       | 104,031           | 34,112           | 2,182            | 36,294           |
| 19       | Pen                          | 30,203            | 9,349            | 778              | 10,127           |
| 20       | Uran                         | 23,254            | 6,771            | 1,102            | 7,873            |
|          | Sub-Total (C)                | <b>266,319</b>    | <b>82,308</b>    | <b>8,613</b>     | <b>90,921</b>    |
| <b>C</b> | <b>Census Town</b>           |                   |                  |                  |                  |
|          | <b>Thane District</b>        |                   |                  |                  |                  |
| 21       | Sandor                       | 8,336             | 2,710            | 762              | 3,472            |
| 22       | Khoni                        | 22,687            | 10,246           | 184              | 10,430           |
| 23       | Kopharad                     | 5,267             | 2,203            | 187              | 2,390            |
| 24       | Gokhiware                    | 19,772            | 7,082            | 522              | 7,604            |
| 25       | Waliv                        | 15,312            | 5,806            | 597              | 6,403            |
| 26       | Kon                          | 15,167            | 4,175            | 659              | 4,834            |
|          | Sub-Total (D)                | <b>86,541</b>     | <b>32,222</b>    | <b>2,911</b>     | <b>35,133</b>    |
|          | <b>Raigad District</b>       |                   |                  |                  |                  |
| 27       | Kegaon                       | 7,924             | 1,967            | 310              | 2,277            |
| 28       | Taloje Panchnand             | 10,858            | 3,199            | 528              | 3,727            |
| 29       | Kalundre                     | 7,581             | 2,076            | 260              | 2,336            |
| 30       | Ambivali Taraf Wankhal       | 6,796             | 2,104            | 226              | 2,330            |
| 31       | Mohpada alias Wasambe        | 8,735             | 2,776            | 111              | 2,887            |
| 32       | Neral                        | 14,739            | 3,950            | 593              | 4,543            |
|          | Sub-Total (E)                | <b>56,633</b>     | <b>16,072</b>    | <b>2,028</b>     | <b>18,100</b>    |
| <b>D</b> | <b>Urban MMR (A+B+C+D+E)</b> | <b>17,845,935</b> | <b>6,241,011</b> | <b>375,163</b>   | <b>6,616,174</b> |

**Note:** Resident worker in MMR means who resides in MMR and is reported working .



**Table 11 : Employment in MMR (1998)**

| Sr. No.  | Unit                                      | Adult male       | Adult female   | Child male    | Child female  | Total            |
|----------|---|------------------|----------------|---------------|---------------|------------------|
| <b>A</b> | <b>Municipal Corporation</b>              |                  |                |               |               |                  |
| 1        | Greater Mumbai                            | 2,217,073        | 368,500        | 32,581        | 7,594         | 2,625,748        |
| 2        | Thane                                     | 150,892          | 24,234         | 1,389         | 378           | 176,893          |
| 3        | Ulhasnagar                                | 64,792           | 4,427          | 297           | 89            | 69,605           |
| 4        | Kalyan-Dombivali                          | 87,960           | 11,706         | 1,184         | 228           | 101,078          |
| 5        | Mira-Bhayander                            | 56,668           | 6,757          | 2,849         | 556           | 66,830           |
| 6        | Bhiwandi-Nizampur                         | 178,987          | 1,441          | 1,369         | 141           | 181,938          |
| 7        | Navi Mumbai                               | 76,834           | 8,633          | 2,263         | 172           | 87,902           |
|          | Sub-Total (A)                             | <b>2,833,206</b> | <b>425,698</b> | <b>41,932</b> | <b>9,158</b>  | <b>3,309,994</b> |
| <b>B</b> | <b>Municipal Council</b>                  |                  |                |               |               |                  |
|          | <b>Thane District</b>                     |                  |                |               |               |                  |
| 8        | Ambarnath                                 | 13,246           | 1,699          | 1,151         | 67            | 16,163           |
| 9        | Kulgaon-Badlapur                          | 5,478            | 733            | 134           | 26            | 6,371            |
| 10       | Nallasopara                               | 8,822            | 1,527          | 245           | 57            | 10,651           |
| 11       | Vasai                                     | 4,841            | 726            | 42            | 28            | 5,637            |
| 12       | Virar                                     | 6,645            | 781            | 158           | 98            | 7,682            |
| 13       | Navghar Manikpur                          | 8,743            | 959            | 64            | 10            | 9,776            |
|          | Sub-Total (B)                             | <b>47,775</b>    | <b>6,425</b>   | <b>1,794</b>  | <b>286</b>    | <b>56,280</b>    |
|          | <b>Raigad District</b>                    |                  |                |               |               |                  |
| 14       | Alibag                                    | 5,937            | 1,271          | 32            | 7             | 7,247            |
| 15       | Karjat                                    | 2,568            | 355            | 331           | 31            | 3,285            |
| 16       | Khopoli                                   | 7,582            | 681            | 5             | 1             | 8,269            |
| 17       | Matheran                                  | 2,083            | 180            | 13            | 0             | 2,276            |
| 18       | Panvel                                    | 29,959           | 3,085          | 151           | 24            | 33,219           |
| 19       | Pen                                       | 4,796            | 873            | 39            | 13            | 5,721            |
| 20       | Uran                                      | 3,601            | 544            | 83            | 2             | 4,230            |
|          | Sub-Total (C)                             | <b>56,526</b>    | <b>6,989</b>   | <b>654</b>    | <b>78</b>     | <b>64,247</b>    |
| <b>C</b> | <b>Urban MMR (A+B+C) and Census towns</b> | <b>2,955,856</b> | <b>440,552</b> | <b>44,742</b> | <b>9,631</b>  | <b>3,450,781</b> |
| <b>D</b> | <b>Rural MMR</b>                          | <b>87,985</b>    | <b>18,814</b>  | <b>1,828</b>  | <b>723</b>    | <b>109,350</b>   |
| <b>E</b> | <b>Grand Total</b>                        | <b>3,043,841</b> | <b>459,366</b> | <b>46,570</b> | <b>10,354</b> | <b>3,560,131</b> |

Source : Economic Census 1998

**Table 12 : Growth of Population, Resident Workers and Employment in Greater Mumbai**

| Year | Population | Comp. Gr. Rate | Resident Workers | Comp. Gr. Rate | Total Employment | Comp. Gr. Rate |
|------|------------|----------------|------------------|----------------|------------------|----------------|
| 1971 | 5,970,575  |                | 2,198,098        |                | 1,528,264        |                |
| 1981 | 8,243,405  | 3.28           | 2,902,503        | 2.82           | 2,199,381        | 3.71           |
| 1991 | 9,925,891  | 1.87           | 3,498,876        | 1.89           | 2,425,882        | 0.99           |
| 2001 | 11,914,398 | 1.84           | 4,527,926        | 2.61           | 2,625,748 *      | 0.99           |

\* For the year 1998

**Observations :**

- (1) About one third of the population in Greater Mumbai is found working during 1971-2001
- (2) Growth of the resident workers in Greater Mumbai declined during the period 1981-1991 whereas it has increased during 1991-2001.
- (3) Employment in Greater Mumbai has stagnated during 1980-1998 period with growth rate just around 1%

**Table 13: Number of Establishments and Employment in Greater Mumbai According to NIC Divisions**

| NIC Code | Description   | 1980           |                  | 1990           |                  | 1998           |                  |
|----------|---|----------------|------------------|----------------|------------------|----------------|------------------|
|          |   | Est.           | Emp.             | Est.           | Emp.             | Est.           | Emp.             |
| 0        | Agriculture, hunting, forestry and fishing              | 2,881          | 23,119           | 1,982          | 10,491           | 1,240          | 6,877            |
| 1        | Mining and quarrying                                    | 31             | 920              | 60             | 348              | 26             | 182              |
| 2 & 3    | Manufacturing & Repair Services                         | 71,411         | 791,120          | 73,495         | 690,621          | 59,433         | 468,409          |
| 4        | Electricity, Gas and Water                              | 796            | 14,388           | 566            | 10,997           | 119            | 7,620            |
| 5        | Construction  | 2,772          | 14,028           | 5,656          | 20,082           | 4,677          | 16,001           |
| 6        | Wholesale & Retail Trade and Restaurants and Hotels     | 139,926        | 545,591          | 212,916        | 705,127          | 278,038        | 747,654          |
| 7        | Transport, Storage and Communication                    | 11,708         | 209,883          | 23,414         | 131,472          | 33,038         | 263,493          |
| 8        | Financing, Insurance, Real Estate and Business Services | 11,382         | 138,849          | 19,738         | 248,541          | 27,789         | 352,055          |
| 9        | Communication, Social and Personal Services             | 31,501         | 303,557          | 81,612         | 578,945          | 79,255         | 753,624          |
| 10       | Others  | 11,798         | 157,996          | 3,979          | 29,257           | 1,811          | 9,833            |
|          | <b>Total</b>  | <b>284,206</b> | <b>2,199,451</b> | <b>423,418</b> | <b>2,425,881</b> | <b>485,426</b> | <b>2,625,748</b> |

**Observations :**

- 1) There is substantial decrease in the employment in manufacturing sector during the period 1980-1998 .
- 2) Growth in total number of establishments during 1990-98 period is marginal .
- 3) Employment in tertiary sector (NIC codes 8,9 & 10 together) has nearly doubled over 1980-98 period.

**Table 14: Ward-wise Distribution of Establishments and Employment for Office Sector in Greater Mumbai over 1980-1998 period**

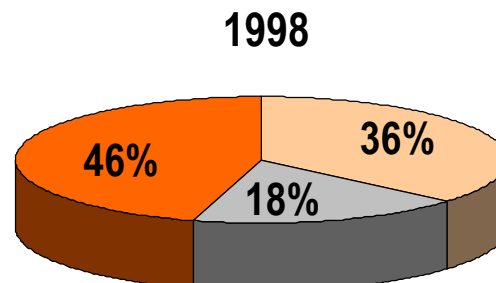
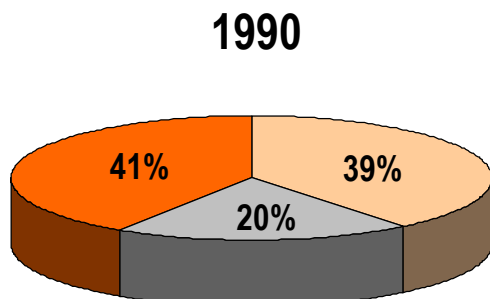
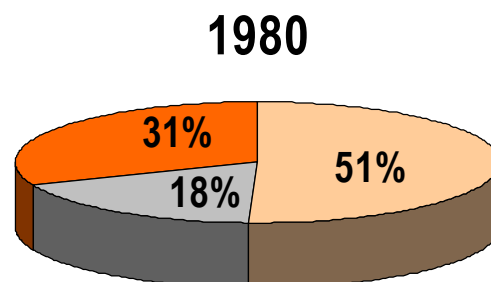
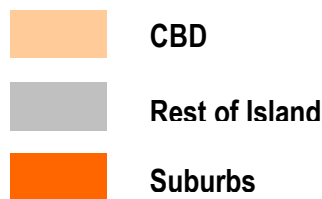
| Ward           |      | Office Sector  |               |                |               |                |               |
|----------------|------|----------------|---------------|----------------|---------------|----------------|---------------|
|                |      | 1980           | % of total    | 1990           | % of total    | 1998           | % of total    |
| A              | Est. | 4,575          | 19.61%        | 8,721          | 20.58%        | 9,398          | 19.05%        |
|                | Emp. | 126,608        | 35.92%        | 226,171        | 35.97%        | 328,391        | 37.73%        |
| B              | Est. | 2,022          | 8.67%         | 2,602          | 6.14%         | 2,851          | 5.78%         |
|                | Emp. | 16,425         | 4.66%         | 18,888         | 3.00%         | 23,021         | 2.64%         |
| C              | Est. | 2,954          | 12.66%        | 2,684          | 6.33%         | 3,219          | 6.53%         |
|                | Emp. | 20,805         | 5.90%         | 19,871         | 3.16%         | 26,593         | 3.06%         |
| D              | Est. | 2,265          | 9.71%         | 2,612          | 6.16%         | 2,468          | 5.00%         |
|                | Emp. | 29,050         | 8.24%         | 33,786         | 5.37%         | 36,647         | 4.21%         |
| C.B.D.         | Est. | <b>11,816</b>  | <b>50.66%</b> | <b>16,619</b>  | <b>39.22%</b> | <b>17,936</b>  | <b>36.36%</b> |
|                | Emp. | <b>192,888</b> | <b>54.72%</b> | <b>298,716</b> | <b>47.50%</b> | <b>414,652</b> | <b>47.64%</b> |
| E              | Est. | 1,075          | 4.61%         | 2,026          | 4.78%         | 1,738          | 3.52%         |
|                | Emp. | 14,494         | 4.11%         | 27,523         | 4.38%         | 48,635         | 5.59%         |
| F              | Est. | 1,353          | 5.80%         | 2,710          | 6.39%         | 3,125          | 6.34%         |
|                | Emp. | 20,947         | 5.94%         | 51,387         | 8.17%         | 79,742         | 9.16%         |
| G              | Est. | 1,822          | 7.81%         | 3,672          | 8.66%         | 4,111          | 8.33%         |
|                | Emp. | 34,994         | 9.93%         | 57,113         | 9.08%         | 75,206         | 8.64%         |
| Rest of Island | Est. | <b>4,250</b>   | <b>18.22%</b> | <b>8,408</b>   | <b>19.84%</b> | <b>8,974</b>   | <b>18.19%</b> |
|                | Emp. | <b>70,435</b>  | <b>19.98%</b> | <b>136,023</b> | <b>21.63%</b> | <b>203,583</b> | <b>23.39%</b> |
| H              | Est. | 1,077          | 4.62%         | 2,303          | 5.43%         | 2,181          | 4.42%         |
|                | Emp. | 16,397         | 4.65%         | 32,132         | 5.11%         | 46,738         | 5.37%         |
| K              | Est. | 1,266          | 5.43%         | 3,434          | 8.10%         | 5,679          | 11.51%        |
|                | Emp. | 19,328         | 5.48%         | 41,668         | 6.63%         | 61,200         | 7.03%         |
| L              | Est. | 656            | 2.81%         | 1,417          | 3.34%         | 1,563          | 3.17%         |
|                | Emp. | 5,080          | 1.44%         | 12,131         | 1.93%         | 15,645         | 1.80%         |
| M              | Est. | 705            | 3.02%         | 2,342          | 5.53%         | 1,904          | 3.86%         |
|                | Emp. | 8,750          | 2.48%         | 25,981         | 4.13%         | 27,507         | 3.16%         |
| N              | Est. | 766            | 3.28%         | 1,685          | 3.98%         | 1,905          | 3.86%         |
|                | Emp. | 9,067          | 2.57%         | 20,097         | 3.20%         | 22,580         | 2.59%         |
| P              | Est. | 1,584          | 6.79%         | 2,453          | 5.79%         | 3,214          | 6.52%         |
|                | Emp. | 17,652         | 5.01%         | 21,623         | 3.44%         | 34,365         | 3.95%         |
| R              | Est. | 930            | 3.99%         | 2,056          | 4.85%         | 3,600          | 7.30%         |
|                | Emp. | 8,607          | 2.44%         | 17,937         | 2.85%         | 34,451         | 3.96%         |
| S              | Est. |                | 0.00%         |                | 0.00%         | 880            | 1.78%         |
|                | Emp. |                | 0.00%         |                | 0.00%         | 8,209          | 0.94%         |
| T              | Est. | 275            | 1.18%         | 1,662          | 3.92%         | 1,487          | 3.01%         |
|                | Emp. | 4,264          | 1.21%         | 22,508         | 3.58%         | 1,487          | 0.17%         |
| Suburbs        | Est. | <b>7,259</b>   | <b>31.12%</b> | <b>17,352</b>  | <b>40.94%</b> | <b>22,413</b>  | <b>45.44%</b> |
|                | Emp. | <b>89,145</b>  | <b>25.29%</b> | <b>194,077</b> | <b>30.86%</b> | <b>252,182</b> | <b>28.97%</b> |
| Greater Mumbai | Est. | <b>23,325</b>  | <b>100%</b>   | <b>42,379</b>  | <b>100%</b>   | <b>49,323</b>  | <b>100%</b>   |
|                | Emp. | <b>352,468</b> | <b>100%</b>   | <b>628,816</b> | <b>100%</b>   | <b>870,417</b> | <b>100%</b>   |

|             |  |
|-------------|--|
| <b>Note</b> | Office sector is defined by the following code numbers :   |
| 73          | Transport services : Packing, Carting, Travel Agencies etc.  |
| 80 & 81     | Banking and allied activities , Provident and Insurance<br>Business, Professional & Legal Services, Operation of Lotteries, Renting & Leasing not elsewhere<br>classified & Auctioneering Services |
| 82-85 & 89  |  |
| 90          | Public Administration and Defense Services   |
| 92          | Education, Scientific & Research Services  |
| 94          | Welfare, Business, Professional & Labour Organisations   |
| 95          | Recreational & Cultural Services   |
| 99          | International & Extra Territorial Bodies   |

**Observations :**

- 1) Share of office sector employment in the total in CBD has decreased from 54 % to 48 % while the share of establishments has reduced from 51% to 36% over 1980-1998 period.
- 2) Office sector employment in Rest of Island city (wards E,F &G ) has substantially increased over 1980-98 period.
- 3) Share of both establishments and employment in office sector is steadily increasing over 1980-98 period.

**Spatial Distribution of Office Establishments in Greater Mumbai 1980, 1990, 1998**



**Table 15: Distribution of Establishments by Employment Size-Class in MMR (1998)**

| Unit               |      | 1              | 2-5            | 6-19           | 20-49          | 50-199         | 200+           | Total            |
|--------------------|------|----------------|----------------|----------------|----------------|----------------|----------------|------------------|
| <b>URBAN</b>       |      |                |                |                |                |                |                |                  |
| Greater Mumbai     | Est. | 194,797        | 225,385        | 51,946         | 8,504          | 3,762          | 1,032          | 485,426          |
|                    | Emp. | 194,797        | 645,464        | 479,589        | 241,755        | 325,394        | 738,749        | 2,625,748        |
| Thane              | Est. | 67,267         | 78,112         | 17,362         | 4,955          | 725            | 165            | 168,586          |
|                    | Emp. | 67,267         | 216,560        | 160,876        | 136,059        | 63,317         | 112,577        | 756,656          |
| Raigad             | Est. | 5,954          | 6,393          | 1,291          | 351            | 126            | 26             | 14,141           |
|                    | Emp. | 5,954          | 17,028         | 13,199         | 9,999          | 10,661         | 11,536         | 68,377           |
| Sub-total (A)      | Est. | <b>268,018</b> | <b>309,890</b> | <b>70,599</b>  | <b>13,810</b>  | <b>4,613</b>   | <b>1,223</b>   | <b>668,153</b>   |
|                    | Emp. | <b>268,018</b> | <b>879,052</b> | <b>653,664</b> | <b>387,813</b> | <b>399,372</b> | <b>862,862</b> | <b>3,450,781</b> |
| <b>RURAL</b>       |      |                |                |                |                |                |                |                  |
| Thane              | Est. | 7,770          | 6,228          | 2,083          | 344            | 29             | 24             | 16,478           |
|                    | Emp. | 7,770          | 15,930         | 20,782         | 8,963          | 2,877          | 6,693          | 63,015           |
| Raigad             | Est. | 4,742          | 7,324          | 1,212          | 96             | 15             | 13             | 13,398           |
|                    | Emp. | 4,742          | 19,047         | 10,990         | 2,567          | 1,201          | 35,708         | 46,335           |
| Sub-total (B)      | Est. | <b>12,512</b>  | <b>13,552</b>  | <b>3,295</b>   | <b>440</b>     | <b>44</b>      | <b>37</b>      | <b>29,876</b>    |
|                    | Emp. | <b>12,512</b>  | <b>34,977</b>  | <b>31,772</b>  | <b>11,530</b>  | <b>4,078</b>   | <b>42,401</b>  | <b>109,350</b>   |
| <b>Total (A+B)</b> | Est. | <b>280,530</b> | <b>323,442</b> | <b>73,894</b>  | <b>14,250</b>  | <b>4,657</b>   | <b>1,260</b>   | <b>698,029</b>   |
|                    | Emp. | <b>280,530</b> | <b>914,029</b> | <b>685,436</b> | <b>399,343</b> | <b>403,450</b> | <b>905,263</b> | <b>3,560,131</b> |

**Observations :**

- (1) In Greater Mumbai employment in large establishments (having more than 50 employees) constitutes 41 % of its total employment.
- (2) In Thane and Raigad rural about 70 % of the total employment is found in establishments having less than 20 employees .
- (3) In total MMR the employment is equally divided in establishments employing less than 20 persons and in the rest.

**Table 16: Size-wise Office Sector Employment in Greater Mumbai 1998**

| NIC Code     | Year | 1             |               | 2-4           |               | 5-19          |                | 20-49        |                | 50-99        |                | 100-249    |                | 250-499    |               | 500 +      |                | TOTAL         |                |
|--------------|------|---------------|---------------|---------------|---------------|---------------|----------------|--------------|----------------|--------------|----------------|------------|----------------|------------|---------------|------------|----------------|---------------|----------------|
|              |      | Est.          | Emp.          | Est.          | Emp.          | Est.          | Emp.           | Est.         | Emp.           | Est.         | Emp.           | Est.       | Emp.           | Est.       | Emp.          | Est.       | Emp.           | Est.          | Emp.           |
| 73           | 1998 | 563           | 563           | 1,849         | 5,267         | 1,192         | 9,667          | 225          | 6,832          | 44           | 2,647          | 5          | 807            | 1          | 307           | 0          | 0              | 3,879         | 26,090         |
| 80           | 1998 | 246           | 246           | 775           | 2,296         | 1,650         | 19,405         | 1,496        | 43,841         | 474          | 31,492         | 154        | 22,085         | 38         | 12,695        | 24         | 31,477         | 4,857         | 163,537        |
| 81           | 1998 | 110           | 110           | 102           | 281           | 138           | 1,425          | 75           | 2,345          | 59           | 3,842          | 20         | 2,836          | 2          | 816           | 3          | 2,079          | 509           | 13,734         |
| 82           | 1998 | 558           | 558           | 725           | 1,955         | 316           | 2,505          | 36           | 1,053          | 4            | 233            | 0          | 0              | 1          | 301           | 0          | 0              | 1,640         | 6,605          |
| 83           | 1998 | 430           | 430           | 576           | 1,537         | 291           | 2,148          | 138          | 4,507          | 11           | 643            | 2          | 259            | 0          | 0             | 0          | 0              | 1,448         | 9,524          |
| 84           | 1998 | 518           | 518           | 283           | 656           | 16            | 122            | 0            | 0              | 0            | 0              | 0          | 0              | 0          | 0             | 0          | 0              | 817           | 1,296          |
| 85           | 1998 | 451           | 451           | 700           | 1,882         | 177           | 1,288          | 15           | 475            | 0            | 0              | 0          | 0              | 0          | 0             | 0          | 0              | 1,343         | 4,096          |
| 89           | 1998 | 2,369         | 2,369         | 7,526         | 21,602        | 5,711         | 46,986         | 1,153        | 34,563         | 295          | 19,826         | 90         | 13,429         | 22         | 7,658         | 9          | 6,830          | 17,175        | 153,263        |
| 90           | 1998 | 103           | 103           | 347           | 1,033         | 1,127         | 13,343         | 632          | 17,990         | 476          | 33,073         | 431        | 69,358         | 155        | 53,037        | 138        | 181,054        | 3,409         | 368,991        |
| 92           | 1998 | 2,272         | 2,272         | 2,147         | 5,943         | 1,784         | 18,233         | 724          | 20,675         | 436          | 30,202         | 182        | 25,878         | 20         | 6,180         | 6          | 3,528          | 7,571         | 112,911        |
| 94           | 1998 | 1,880         | 1,880         | 1,342         | 3,559         | 781           | 6,471          | 146          | 4,315          | 32           | 2,068          | 7          | 898            | 1          | 321           | 0          | 0              | 4,189         | 19,512         |
| 95           | 1998 | 676           | 676           | 931           | 2,524         | 499           | 4,236          | 60           | 1,706          | 19           | 1,193          | 8          | 1,185          | 2          | 727           | 0          | 0              | 2,195         | 12,247         |
| 99           | 1998 | 91            | 91            | 135           | 371           | 63            | 470            | 1            | 30             | 1            | 79             | 0          | 0              | 0          | 0             | 0          | 0              | 291           | 1,041          |
| <b>Total</b> |      | <b>10,267</b> | <b>10,267</b> | <b>17,438</b> | <b>48,906</b> | <b>13,745</b> | <b>126,299</b> | <b>4,701</b> | <b>138,332</b> | <b>1,851</b> | <b>125,298</b> | <b>899</b> | <b>136,735</b> | <b>242</b> | <b>82,042</b> | <b>180</b> | <b>224,968</b> | <b>49,323</b> | <b>892,847</b> |





**Table 17: Change in Office Sector Employment in Greater Mumbai 1990-1998**

| NIC Code | Year | 1      |        | 2-4    |        | 5-19   |         | 20-49 |         | 50-99 |         | 100-249 |         | 250-499 |        | 500 + |         | TOTAL  |         |
|----------|------|--------|--------|--------|--------|--------|---------|-------|---------|-------|---------|---------|---------|---------|--------|-------|---------|--------|---------|
|          |      | Est.   | Emp.   | Est.   | Emp.   | Est.   | Emp.    | Est.  | Emp.    | Est.  | Emp.    | Est.    | Emp.    | Est.    | Emp.   | Est.  | Emp.    | Est.   | Emp.    |
| 73       | 1990 | 415    | 415    | 1,586  | 4,599  | 1,274  | 10,455  | 142   | 3,953   | 22    | 1,447   | 7       | 904     | 2       | 555    | 1     | 593     | 3,449  | 22,921  |
|          | 1998 | 563    | 563    | 1,849  | 5,267  | 1,192  | 9,667   | 225   | 6,832   | 44    | 2,647   | 5       | 807     | 1       | 307    | 0     | 0       | 3,879  | 26,090  |
| 80       | 1990 | 274    | 274    | 603    | 1,677  | 1,041  | 11,604  | 989   | 30,802  | 283   | 18,677  | 89      | 12,425  | 20      | 6,639  | 12    | 22,391  | 3,311  | 104,489 |
|          | 1998 | 246    | 246    | 775    | 2,296  | 1,650  | 19,405  | 1,496 | 43,841  | 474   | 31,492  | 154     | 22,085  | 38      | 12,695 | 24    | 31,477  | 4,857  | 163,537 |
| 81       | 1990 | 116    | 116    | 53     | 151    | 53     | 504     | 43    | 1,469   | 51    | 3,458   | 11      | 1,668   | 2       | 728    | 5     | 3,810   | 334    | 11,904  |
|          | 1998 | 110    | 110    | 102    | 281    | 138    | 1,425   | 75    | 2,345   | 59    | 3,842   | 20      | 2,836   | 2       | 816    | 3     | 2,079   | 509    | 13,734  |
| 82       | 1990 | 344    | 344    | 439    | 1,175  | 159    | 1,245   | 11    | 315     | 5     | 338     | 1       | 150     | 0       | 0      | 0     | 0       | 959    | 3,567   |
|          | 1998 | 558    | 558    | 725    | 1,955  | 316    | 2,505   | 36    | 1,053   | 4     | 233     | 0       | 0       | 1       | 301    | 0     | 0       | 1,640  | 6,605   |
| 83       | 1990 | 434    | 434    | 707    | 1,944  | 298    | 2,195   | 17    | 521     | 4     | 223     | 2       | 242     | 0       | 0      | 0     | 0       | 1,462  | 5,559   |
|          | 1998 | 430    | 430    | 576    | 1,537  | 291    | 2,148   | 138   | 4,507   | 11    | 643     | 2       | 259     | 0       | 0      | 0     | 0       | 1,448  | 9,524   |
| 84       | 1990 | 158    | 158    | 51     | 126    | 17     | 125     | 1     | 44      | 0     | 0       | 0       | 0       | 0       | 0      | 0     | 0       | 227    | 453     |
|          | 1998 | 518    | 518    | 283    | 656    | 16     | 122     | 0     | 0       | 0     | 0       | 0       | 0       | 0       | 0      | 0     | 0       | 817    | 1,296   |
| 85       | 1990 | 367    | 367    | 443    | 1,144  | 140    | 1,022   | 11    | 323     | 2     | 113     | 0       | 0       | 0       | 0      | 0     | 0       | 963    | 2,969   |
|          | 1998 | 451    | 451    | 700    | 1,882  | 177    | 1,288   | 15    | 475     | 0     | 0       | 0       | 0       | 0       | 0      | 0     | 0       | 1,343  | 4,096   |
| 89       | 1990 | 1,733  | 1,733  | 4,965  | 14,447 | 4,745  | 39,979  | 760   | 22,202  | 184   | 12,540  | 62      | 9,461   | 22      | 7,343  | 11    | 11,895  | 12,482 | 119,600 |
|          | 1998 | 2,369  | 2,369  | 7,526  | 21,602 | 5,711  | 46,986  | 1,153 | 34,563  | 295   | 19,826  | 90      | 13,429  | 22      | 7,658  | 9     | 6,830   | 17,175 | 153,263 |
| 90       | 1990 | 557    | 557    | 1,188  | 3,341  | 1,431  | 14,026  | 697   | 21,731  | 369   | 25,326  | 288     | 45,519  | 92      | 30,529 | 71    | 91,472  | 4,693  | 232,501 |
|          | 1998 | 103    | 103    | 347    | 1,033  | 1,127  | 13,343  | 632   | 17,990  | 476   | 33,073  | 431     | 69,358  | 155     | 53,037 | 138   | 181,054 | 3,409  | 368,991 |
| 92       | 1990 | 789    | 789    | 1,275  | 3,520  | 1,233  | 12,128  | 581   | 17,566  | 272   | 18,804  | 118     | 16,547  | 13      | 3,970  | 4     | 2,385   | 4,285  | 75,709  |
|          | 1998 | 2,272  | 2,272  | 2,147  | 5,943  | 1,784  | 18,233  | 724   | 20,675  | 436   | 30,202  | 182     | 25,878  | 20      | 6,180  | 6     | 3,528   | 7,571  | 112,911 |
| 94       | 1990 | 2,548  | 2,548  | 2,039  | 5,432  | 1,053  | 8,804   | 162   | 4,588   | 39    | 2,617   | 15      | 1,901   | 2       | 583    | 0     | 0       | 5,858  | 26,473  |
|          | 1998 | 1,880  | 1,880  | 1,342  | 3,559  | 781    | 6,471   | 146   | 4,315   | 32    | 2,068   | 7       | 898     | 1       | 321    | 0     | 0       | 4,189  | 19,512  |
| 95       | 1990 | 1,513  | 1,513  | 1,842  | 4,895  | 806    | 6,624   | 121   | 3,424   | 18    | 1,132   | 17      | 2,338   | 4       | 1,317  | 1     | 610     | 4,322  | 21,853  |
|          | 1998 | 676    | 676    | 931    | 2,524  | 499    | 4,236   | 60    | 1,706   | 19    | 1,193   | 8       | 1,185   | 2       | 727    | 0     | 0       | 2,195  | 12,247  |
| 99       | 1990 | 576    | 576    | 557    | 1,564  | 305    | 2,465   | 37    | 1,030   | 9     | 557     | 2       | 273     | 0       | 0      | 0     | 0       | 1,486  | 6,465   |
|          | 1998 | 91     | 91     | 135    | 371    | 63     | 470     | 1     | 30      | 1     | 79      | 0       | 0       | 0       | 0      | 0     | 0       | 291    | 1,041   |
| Total    | 1990 | 9,824  | 9,824  | 15,748 | 44,015 | 12,555 | 111,176 | 3,572 | 107,968 | 1,258 | 85,232  | 612     | 91,428  | 157     | 51,664 | 105   | 133,156 | 43,831 | 634,463 |
|          | 1998 | 10,267 | 10,267 | 17,438 | 48,906 | 13,745 | 126,299 | 4,701 | 138,332 | 1,851 | 125,298 | 899     | 136,735 | 242     | 82,042 | 180   | 224,968 | 49,323 | 892,847 |

**Observation :** There is a substantial decline in the employment of the following NIC divisions

94 Welfare, Business, Professional & Labour Organisations

95 Recreational & Cultural Services

99 International & Extra Territorial Bodies

**Table 18: Employment in Agriculture and Other Establishments in MMR (1998)**

|                   |      | Agriculture   | Non-Agriculture  | Total            |
|-------------------|------|---------------|------------------|------------------|
| <b>URBAN</b>      |      |               |                  |                  |
| Greater Mumbai    | Est. | -             | 485,426          | 485,426          |
|                   | Emp. | -             | 2,625,748        | 2,625,748        |
| Thane             | Est. | 2,764         | 165,822          | 168,586          |
|                   | Emp. | 8,222         | 748,434          | 756,656          |
| Raigad            | Est. | 181           | 13,960           | 14,141           |
|                   | Emp. | 669           | 67,708           | 68,377           |
| Sub-Total (A)     | Est. | <b>2,945</b>  | <b>665,208</b>   | <b>668,153</b>   |
|                   | Emp. | <b>8,891</b>  | <b>3,441,890</b> | <b>3,450,781</b> |
| <b>RURAL</b>      |      |               |                  |                  |
| Thane             | Est. | 2,467         | 14,011           | 16,478           |
|                   | Emp. | 5,305         | 57,710           | 63,015           |
| Raigad            | Est. | 1,491         | 11,907           | 13,398           |
|                   | Emp. | 6,621         | 39,714           | 46,335           |
| Sub-Total (B)     | Est. | <b>3,958</b>  | <b>25,918</b>    | <b>29,876</b>    |
|                   | Emp. | <b>11,926</b> | <b>97,424</b>    | <b>109,350</b>   |
| Grand Total (A+B) | Est. | <b>6,903</b>  | <b>691,126</b>   | <b>698,029</b>   |
|                   | Emp. | <b>20,817</b> | <b>3,539,314</b> | <b>3,560,131</b> |

**Observation:** 99 % of the total Establishments and employment are in non-agriculture in MMR.

**Table 19: Employment and Establishments by Nature of Operation in MMR (1998)**

|                   |      | Perennial        | Non-Perennial | Total            |
|-------------------|------|------------------|---------------|------------------|
| <b>URBAN</b>      |      |                  |               |                  |
| Greater Mumbai    | Est. | 480,927          | 4,499         | 485,426          |
|                   | Emp. | 2,615,323        | 10,425        | 2,625,748        |
| Thane             | Est. | 166,805          | 1,781         | 168,586          |
|                   | Emp. | 752,490          | 4,166         | 756,656          |
| Raigad            | Est. | 13,774           | 367           | 14,141           |
|                   | Emp. | 67,016           | 1,361         | 68,377           |
| Sub-Total (A)     | Est. | <b>661,506</b>   | <b>6,647</b>  | <b>668,153</b>   |
|                   | Emp. | <b>3,434,829</b> | <b>15,952</b> | <b>3,450,781</b> |
| <b>RURAL</b>      |      |                  |               |                  |
| Thane             | Est. | 15,849           | 629           | 16,478           |
|                   | Emp. | 56,407           | 6,608         | 63,015           |
| Raigad            | Est. | 1,210            | 12,188        | 13,398           |
|                   | Emp. | 6,418            | 39,917        | 46,335           |
| Sub-Total (B)     | Est. | <b>17,059</b>    | <b>12,817</b> | <b>29,876</b>    |
|                   | Emp. | <b>62,825</b>    | <b>46,525</b> | <b>109,350</b>   |
| Grand Total (A+B) | Est. | <b>678,565</b>   | <b>19,464</b> | <b>698,029</b>   |
|                   | Emp. | <b>3,497,654</b> | <b>62,477</b> | <b>3,560,131</b> |

**Observation:** More than 97 % of the total establishments and employment in MMR are perennial in Nature.

**Table 20: Employment and Establishments with Premises Status in MMR (1998)**

|                   |      | With Premises    | Without Premises | Total            |
|-------------------|------|------------------|------------------|------------------|
| <b>URBAN</b>      |      |                  |                  |                  |
| Greater Mumbai    | Est. | 427,305          | 58,121           | 485,426          |
|                   | Emp. | 2,534,647        | 91,101           | 2,625,748        |
| Thane             | Est. | 149,142          | 19,444           | 168,586          |
|                   | Emp. | 721,615          | 35,041           | 756,656          |
| Raigad            | Est. | 11,451           | 2,690            | 14,141           |
|                   | Emp. | 63,380           | 4,997            | 68,377           |
| Sub-Total (A)     | Est. | <b>587,898</b>   | <b>80,255</b>    | <b>668,153</b>   |
|                   | Emp. | <b>3,319,642</b> | <b>131,139</b>   | <b>3,450,781</b> |
| <b>RURAL</b>      |      |                  |                  |                  |
| Thane             | Est. | 4,156            | 12,322           | 16,478           |
|                   | Emp. | 11,409           | 51,606           | 63,015           |
| Raigad            | Est. | 10,406           | 2,992            | 13,398           |
|                   | Emp. | 33,065           | 13,270           | 46,335           |
| Sub-Total (B)     | Est. | <b>14,562</b>    | <b>15,314</b>    | <b>29,876</b>    |
|                   | Emp. | <b>44,474</b>    | <b>64,876</b>    | <b>109,350</b>   |
| Grand Total (A+B) | Est. | <b>602,460</b>   | <b>95,569</b>    | <b>698,029</b>   |
|                   | Emp. | <b>3,364,116</b> | <b>196,015</b>   | <b>3,560,131</b> |

**Observation :** 86% of the total establishments in MMR operate from premises.

**Table 21: Employment and Establishments by Type of Energy Used in MMR (1998)**

|                   |      | Without Power    | Electricity    | Petrol/Diesel | Others         | Total            |
|-------------------|------|------------------|----------------|---------------|----------------|------------------|
| <b>URBAN</b>      |      |                  |                |               |                |                  |
| Greater Mumbai    | Est. | 383,282          | 58,493         | 17,219        | 26,432         | 485,426          |
|                   | Emp. | 1,887,404        | 534,213        | 36,922        | 167,209        | 2,625,748        |
| Thane             | Est. | 114,069          | 36,510         | 8,956         | 9,051          | 168,586          |
|                   | Emp. | 357,847          | 337,820        | 18,792        | 42,197         | 756,656          |
| Raigad            | Est. | 9,057            | 2,221          | 1,171         | 1,692          | 14,141           |
|                   | Emp. | 33,055           | 26,169         | 3,384         | 5,769          | 68,377           |
| Sub-Total (A)     | Est. | <b>506,408</b>   | <b>97,224</b>  | <b>27,346</b> | <b>37,175</b>  | <b>668,153</b>   |
|                   | Emp. | <b>2,278,306</b> | <b>898,202</b> | <b>59,098</b> | <b>215,175</b> | <b>3,450,781</b> |
| <b>RURAL</b>      |      |                  |                |               |                |                  |
| Thane             | Est. | 10,582           | 2,665          | 1,867         | 1,364          | 16,478           |
|                   | Emp. | 23,360           | 26,813         | 3,620         | 9,222          | 63,015           |
| Raigad            | Est. | 9,342            | 1,415          | 1,661         | 980            | 13,398           |
|                   | Emp. | 23,089           | 12,573         | 6,315         | 4,358          | 46,335           |
| Sub-Total (B)     | Est. | <b>19,924</b>    | <b>4,080</b>   | <b>3,528</b>  | <b>2,344</b>   | <b>29,876</b>    |
|                   | Emp. | <b>46,449</b>    | <b>39,386</b>  | <b>9,935</b>  | <b>13,580</b>  | <b>109,350</b>   |
| Grand Total (A+B) | Est. | <b>526,332</b>   | <b>101,304</b> | <b>30,874</b> | <b>39,519</b>  | <b>698,029</b>   |
|                   | Emp. | <b>2,324,755</b> | <b>937,588</b> | <b>69,033</b> | <b>228,755</b> | <b>3,560,131</b> |

**Observation :** Out of the total establishments in MMR, 75% operate without power, 15% use electricity and 5% use petrol/diesel.

**Table 22: Employment and Establishments by Type of Ownership in MMR (1998)**

|                   |      | Pvt. Non-Profit Institution | Private Others   | Co-operative  | Government     | Total            |
|-------------------|------|-----------------------------|------------------|---------------|----------------|------------------|
| <b>URBAN</b>      |      |                             |                  |               |                |                  |
| Greater Mumbai    | Est. | 2,196                       | 471,953          | 2,238         | 9,039          | 485,426          |
|                   | Emp. | 21,252                      | 1,736,149        | 60,503        | 807,844        | 2,625,748        |
| Thane             | Est. | 1,070                       | 164,602          | 580           | 2,334          | 168,586          |
|                   | Emp. | 7,369                       | 653,817          | 9,863         | 85,607         | 756,656          |
| Raigad            | Est. | 241                         | 13,266           | 107           | 527            | 14,141           |
|                   | Emp. | 960                         | 51,979           | 1,632         | 13,806         | 68,377           |
| Sub-Total (A)     | Est. | <b>3,507</b>                | <b>649,821</b>   | <b>2,925</b>  | <b>11,900</b>  | <b>668,153</b>   |
|                   | Emp. | <b>29,581</b>               | <b>2,441,945</b> | <b>71,998</b> | <b>907,257</b> | <b>3,450,781</b> |
| <b>RURAL</b>      |      |                             |                  |               |                |                  |
| Thane             | Est. | 159                         | 15,117           | 60            | 1,142          | 16,478           |
|                   | Emp. | 456                         | 58,204           | 289           | 4,066          | 63,015           |
| Raigad            | Est. | 827                         | 11,057           | 177           | 1,337          | 13,398           |
|                   | Emp. | 1,020                       | 35,122           | 741           | 9,452          | 46,335           |
| Sub-Total (B)     | Est. | <b>986</b>                  | <b>26,174</b>    | <b>237</b>    | <b>2,479</b>   | <b>29,876</b>    |
|                   | Emp. | <b>1,476</b>                | <b>93,326</b>    | <b>1,030</b>  | <b>13,518</b>  | <b>109,350</b>   |
| Grand Total (A+B) | Est. | <b>4,493</b>                | <b>675,995</b>   | <b>3,162</b>  | <b>14,379</b>  | <b>698,029</b>   |
|                   | Emp. | <b>31,057</b>               | <b>2,535,271</b> | <b>73,028</b> | <b>920,775</b> | <b>3,560,131</b> |

**Observations :**

- (1) Out of the total establishments in MMR , 97% are in private sector employing 71% of the total employment.
- (2) Out of the total establishments in MMR, 2% are in Government sector employing 26% of the total employment.
- (3) Employment per private sector establishment in MMR is 3.75 while that in Government establishments is 64 .

**Table 23: Employment and Establishments by Number of Years of Operation in MMR (1998)**

|                   |      | Less than<br>1 year | 1-5 yrs        | 6-8 yrs        | More than<br>9 years | Total            |
|-------------------|------|---------------------|----------------|----------------|----------------------|------------------|
| <b>URBAN</b>      |      |                     |                |                |                      |                  |
| Greater Mumbai    | Est. | 16,632              | 166,769        | 52,909         | 249,116              | 485,426          |
|                   | Emp. | 48,351              | 440,156        | 158,073        | 1,979,168            | 2,625,748        |
| Thane             | Est. | 6,173               | 87,845         | 21,968         | 52,600               | 168,586          |
|                   | Emp. | 17,340              | 253,692        | 91,638         | 393,986              | 756,656          |
| Raigad            | Est. | 382                 | 4,654          | 1,936          | 7,169                | 14,141           |
|                   | Emp. | 1,466               | 11,774         | 7,820          | 47,317               | 68,377           |
|                   |      |                     |                |                |                      |                  |
| Sub-Total (A)     | Est. | <b>23,187</b>       | <b>259,268</b> | <b>76,813</b>  | <b>308,885</b>       | <b>668,153</b>   |
|                   | Emp. | <b>67,157</b>       | <b>705,622</b> | <b>257,531</b> | <b>2,420,471</b>     | <b>3,450,781</b> |
| <b>RURAL</b>      |      |                     |                |                |                      |                  |
| Thane             | Est. | 162                 | 6,956          | 1,719          | 7,641                | 16,478           |
|                   | Emp. | 424                 | 19,229         | 9,240          | 34,122               | 63,015           |
| Raigad            | Est. | 275                 | 5,154          | 1,775          | 6,194                | 13,398           |
|                   | Emp. | 663                 | 14,097         | 5,206          | 26,369               | 46,335           |
| Sub-Total (B)     | Est. | <b>437</b>          | <b>12,110</b>  | <b>3,494</b>   | <b>13,835</b>        | <b>29,876</b>    |
|                   | Emp. | <b>1,087</b>        | <b>33,326</b>  | <b>14,446</b>  | <b>60,491</b>        | <b>109,350</b>   |
| Grand Total (A+B) | Est. | <b>23,624</b>       | <b>271,378</b> | <b>80,307</b>  | <b>322,720</b>       | <b>698,029</b>   |
|                   | Emp. | <b>68,244</b>       | <b>738,948</b> | <b>271,977</b> | <b>2,480,962</b>     | <b>3,560,131</b> |

**Observation :** Out of the total establishments in MMR, 58% are in operation for more than 6 years



**Table 24: Distribution of Private Enterprises According to Social Group and Gender of Owner**

|                             |             | URBAN            |                |               | RURAL         |               | Total            |
|-----------------------------|-------------|------------------|----------------|---------------|---------------|---------------|------------------|
|                             |             | Gr.Mumbai        | Thane          | Raigad        | Thane         | Raigad        |                  |
| ST female                   | Est.        | 472              | 152            | 19            | 72            | 28            | 743              |
|                             | Emp.        | 2,860            | 327            | 44            | 160           | 87            | 3,478            |
| ST male                     | Est.        | 12,578           | 3,612          | 228           | 510           | 767           | 17,695           |
|                             | Emp.        | 33,243           | 10,000         | 598           | 1,050         | 4,220         | 49,111           |
| SC female                   | Est.        | 1,609            | 359            | 21            | 73            | 22            | 2,084            |
|                             | Emp.        | 3,212            | 2,750          | 57            | 98            | 57            | 6,174            |
| SC male                     | Est.        | 23,426           | 7,378          | 526           | 594           | 510           | 32,434           |
|                             | Emp.        | 59,309           | 18,002         | 1,208         | 1,319         | 1,267         | 81,105           |
| OBC female                  | Est.        | 3,961            | 882            | 184           | 404           | 306           | 5,737            |
|                             | Emp.        | 18,625           | 2,005          | 769           | 726           | 584           | 22,709           |
| OBC male                    | Est.        | 37,014           | 17,834         | 2,302         | 3,933         | 3,485         | 64,568           |
|                             | Emp.        | 84,683           | 48,610         | 6,076         | 9,269         | 8,534         | 157,172          |
| <b>Total (SC+ST+OBC)</b>    | <b>Est.</b> | <b>79,060</b>    | <b>30,217</b>  | <b>3,280</b>  | <b>5,586</b>  | <b>5,118</b>  | <b>123,261</b>   |
|                             | <b>Emp.</b> | <b>201,932</b>   | <b>81,694</b>  | <b>8,752</b>  | <b>12,622</b> | <b>14,749</b> | <b>319,749</b>   |
| Others female               | Est.        | 10,592           | 2,858          | 281           | 342           | 204           | 14,277           |
|                             | Emp.        | 22,649           | 6,660          | 522           | 491           | 394           | 30,716           |
| Others male                 | Est.        | 382,301          | 131,527        | 9,705         | 9,189         | 5,735         | 538,457          |
|                             | Emp.        | 1,511,568        | 565,463        | 42,705        | 45,091        | 19,979        | 2,184,806        |
| Other than Pvt. Enterprises | Est.        | 13,473           | 3,984          | 875           | 1,361         | 2,341         | 22,034           |
|                             | Emp.        | 889,599          | 102,839        | 16,398        | 4,811         | 11,213        | 1,024,860        |
| <b>Grand Total</b>          | <b>Est.</b> | <b>485,426</b>   | <b>168,586</b> | <b>14,141</b> | <b>16,478</b> | <b>13,398</b> | <b>698,029</b>   |
|                             | <b>Emp.</b> | <b>2,625,748</b> | <b>756,656</b> | <b>68,377</b> | <b>63,015</b> | <b>46,335</b> | <b>3,560,131</b> |

**Observation :** Out of the total establishments in MMR, 18 % have employees belonging to SC,ST and OBC categories and share of these employees together is 9% in the total employment.

**Table 25: Ward-wise Population, Establishments and Employment of Greater Mumbai**

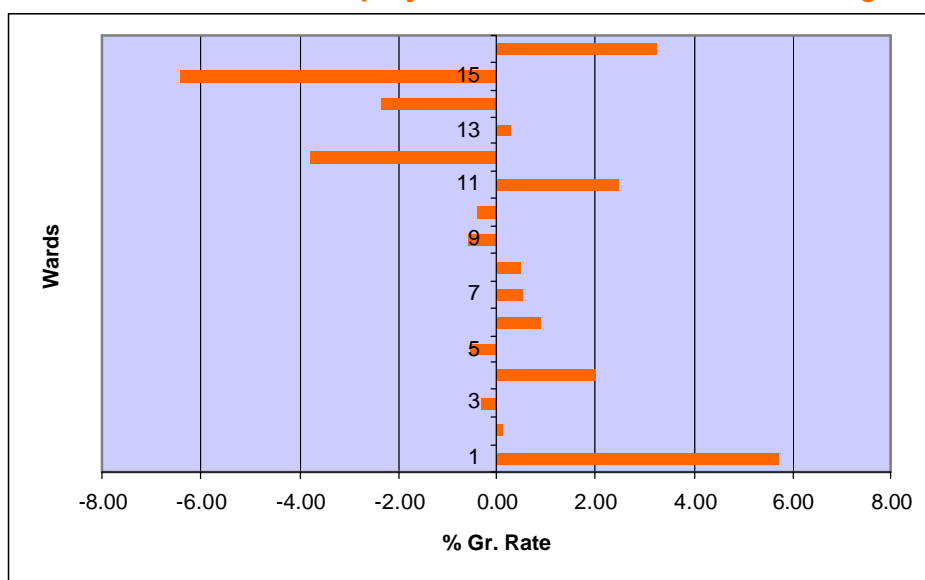
| Ward                      | (2001)<br>Total<br>Population | (1998)<br>No. of<br>Establishments | (1998)<br>Total<br>Employment |
|---------------------------|-------------------------------|------------------------------------|-------------------------------|
| <b>Island City</b>        |                               |                                    |                               |
| A                         | 207,149                       | 34,419                             | 563,840                       |
| B                         | 140,188                       | 22,125                             | 94,277                        |
| C                         | 190,672                       | 44,745                             | 143,643                       |
| D                         | 355,912                       | 31,901                             | 133,692                       |
| E                         | 439,393                       | 30,853                             | 158,477                       |
| F/N                       | 526,839                       | 11,460                             | 76,246                        |
| F/S                       | 392,895                       | 13,511                             | 136,750                       |
| G/N                       | 640,509                       | 29,534                             | 117,291                       |
| G/S                       | 454,245                       | 21,548                             | 164,521                       |
| <b>Sub-Total (A)</b>      | <b>3,347,802</b>              | <b>240,096</b>                     | <b>1,588,737</b>              |
| <b>Western Suburb</b>     |                               |                                    |                               |
| H/E                       | 525,873                       | 12,678                             | 85,849                        |
| H/W                       | 336,051                       | 6,124                              | 34,496                        |
| K/E                       | 865,735                       | 35,836                             | 151,299                       |
| K/W                       | 694,151                       | 13,054                             | 70,541                        |
| P/N                       | 789,545                       | 26,273                             | 89,519                        |
| P/S                       | 436,907                       | 12,060                             | 71,517                        |
| R/N                       | 875,058                       | 27,223                             | 98,836                        |
| R/S                       | 579,954                       | 12,397                             | 52,079                        |
| <b>Sub-Total (B)</b>      | <b>5,103,274</b>              | <b>145,645</b>                     | <b>654,136</b>                |
| <b>Eastern Suburb</b>     |                               |                                    |                               |
| L                         | 774,812                       | 20,368                             | 88,814                        |
| M/E                       | 673,871                       | 17,452                             | 69,461                        |
| M/W                       | 406,973                       | 12,412                             | 43,013                        |
| N                         | 602,609                       | 23,202                             | 75,060                        |
| S                         | 675,007                       | 12,380                             | 36,921                        |
| T                         | 330,050                       | 13,871                             | 69,606                        |
| <b>Sub-Total (C)</b>      | <b>3,463,322</b>              | <b>99,685</b>                      | <b>382,875</b>                |
| <b>Gr. Mumbai (A+B+C)</b> | <b>11,914,398</b>             | <b>485,426</b>                     | <b>2,625,748</b>              |

*Observation : 51 % of the establishments of the total are located in Island City but they have 61% of the total employment in Greater Mumbai .*

**Table 26: Ward-wise Employment in Greater Mumbai in 1990 and 1998**

| Ward                      | 1990             | 1998             | % Gr. Rate   |
|---------------------------|------------------|------------------|--------------|
| <b>Island City</b>        |                  |                  |              |
| A                         | 361,285          | 563,840          | 5.72         |
| B                         | 93,363           | 94,277           | 0.12         |
| C                         | 147,361          | 143,643          | -0.32        |
| D                         | 113,835          | 133,692          | 2.03         |
| E                         | 165,161          | 158,477          | -0.52        |
| F                         | 198,169          | 212,996          | 0.91         |
| G                         | 270,193          | 281,812          | 0.53         |
| <b>Sub-Total (A)</b>      | <b>1,349,367</b> | <b>1,588,737</b> | <b>2.06</b>  |
| <b>Western Suburb</b>     |                  |                  |              |
| H                         | 115,933          | 120,345          | 0.47         |
| K                         | 231,923          | 221,840          | -0.55        |
| P                         | 166,210          | 161,036          | -0.39        |
| R                         | 123,902          | 150,915          | 2.50         |
| <b>Sub-Total (B)</b>      | <b>637,968</b>   | <b>654,136</b>   | <b>0.31</b>  |
| <b>Eastern Suburb</b>     |                  |                  |              |
| L                         | 120,976          | 88,814           | -3.79        |
| M                         | 110,024          | 112,474          | 0.28         |
| N                         | 90,834           | 75,060           | -2.36        |
| S                         | 62,843           | 36,921           | -6.43        |
| T                         | 53,869           | 69,606           | 3.26         |
| <b>Sub-Total (C)</b>      | <b>438,546</b>   | <b>382,875</b>   | <b>-1.68</b> |
| <b>Gr. Mumbai (A+B+C)</b> | <b>2,425,881</b> | <b>2,625,748</b> | <b>0.99</b>  |

**Ward-wise Growth of Employment in Greater Mumbai during 1990-1998**



**Table 27: Rural Total Workers in Thane District in MMR (1998)**

| Name of Tehsil | Adults (Male) | Adults (Female) | Child (Male) | Child (Female) | Total         |
|----------------|---------------|-----------------|--------------|----------------|---------------|
| Bhiwandi       | 21,856        | 4,539           | 187          | 29             | 26,611        |
| Kalyan         | 1,647         | 674             | 56           | 8              | 2,385         |
| Ulhasnagar     | 2,561         | 1,138           | 5            | 10             | 3,714         |
| Vasai          | 24,281        | 4,345           | 1,082        | 597            | 30,305        |
| <b>Total</b>   | <b>50,345</b> | <b>10,696</b>   | <b>1,330</b> | <b>644</b>     | <b>63,015</b> |

*Note :* Total workers denotes number of persons usually working including hired workers

**Table 28: Rural Hired Workers in Thane District in MMR (1998)**

| Name of Tehsil | Adults (Male) | Adults (Female) | Child (Male) | Child (Female) | Total         |
|----------------|---------------|-----------------|--------------|----------------|---------------|
| Bhiwandi       | 14,623        | 3,288           | 150          | 22             | 18,083        |
| Kalyan         | 636           | 426             | 5            | 1              | 1,068         |
| Ulhasnagar     | 974           | 655             | -            | -              | 1,629         |
| Vasai          | 17,575        | 3,095           | 996          | 546            | 22,212        |
| <b>Total</b>   | <b>33,808</b> | <b>7,464</b>    | <b>1,151</b> | <b>569</b>     | <b>42,992</b> |

*Note :* Total workers denotes number of persons usually working including hired workers

**Table 29: Rural Total Workers in Raigad District in MMR (1998)**

| Name of Tehsil | Adults (male) | Adults (Female) | Child (male) | Child (Female) | Total         |
|----------------|---------------|-----------------|--------------|----------------|---------------|
| Alibag         | 9,033         | 1,988           | 36           | 27             | 11,084        |
| Uran           | 6,006         | 1,417           | 410          | 36             | 7,869         |
| Panvel         | 11,539        | 2,121           | 45           | 7              | 13,712        |
| Karjat         | 2,900         | 629             | 2            | -              | 3,531         |
| Khalapur       | 4,599         | 835             | 1            | 1              | 5,436         |
| Pen            | 3,563         | 1,128           | 4            | 8              | 4,703         |
| <b>Total</b>   | <b>37,640</b> | <b>8,118</b>    | <b>498</b>   | <b>79</b>      | <b>46,335</b> |

*Note* : Total workers denotes number of persons usually working including hired workers

**Table 30: Rural Hired Workers in Raigad District in MMR (1998)**

| Name of Tehsil | Hired Adult (male) | Hired Adult (female) | Hired Child (male) | Hired Child (female) | Total         |
|----------------|--------------------|----------------------|--------------------|----------------------|---------------|
| Alibag         | 5,999              | 942                  | 8                  | -                    | 6,949         |
| Uran           | 3,472              | 585                  | 359                | 6                    | 4,422         |
| Panvel         | 7,920              | 1,476                | 12                 | 2                    | 9,410         |
| Karjat         | 1,022              | 379                  | 2                  | -                    | 1,403         |
| Khalapur       | 3,062              | 519                  | 1                  | -                    | 3,582         |
| Pen            | 1,841              | 601                  | 1                  | -                    | 2,443         |
| <b>Total</b>   | <b>23,316</b>      | <b>4,502</b>         | <b>383</b>         | <b>8</b>             | <b>28,209</b> |

**Table 31: Distribution of Total Workers in Greater Mumbai, Thane and Raigad (1998)**

|              | URBAN            |                |               | RURAL         |               | Total            |
|--------------|------------------|----------------|---------------|---------------|---------------|------------------|
|              | Greater Mumbai   | Thane          | Raigad        | Thane         | Raigad        |                  |
| Adult male   | 2,217,073        | 678,436        | 60,347        | 50,345        | 37,640        | 3,043,841        |
| Adult female | 368,500          | 64,756         | 7,296         | 10,696        | 8,118         | 459,366          |
| Child male   | 32,581           | 11,505         | 656           | 1,330         | 498           | 46,570           |
| Child female | 7,594            | 1,959          | 78            | 644           | 79            | 10,354           |
| <b>Total</b> | <b>2,625,748</b> | <b>756,656</b> | <b>68,377</b> | <b>63,015</b> | <b>46,335</b> | <b>3,560,131</b> |

**Table 32: Distribution of Hired Workers in Greater Mumbai, Thane and Raigad (1998)**

|                    | URBAN            |                |               | RURAL         |               | Total            |
|--------------------|------------------|----------------|---------------|---------------|---------------|------------------|
|                    | Greater Mumbai   | Thane          | Raigad        | Thane         | Raigad        |                  |
| Hired adult male   | 1,680,530        | 491,306        | 43,702        | 33,808        | 23,316        | 2,272,662        |
| Hired adult female | 334,643          | 55,719         | 5,919         | 7,464         | 4,502         | 408,247          |
| Hired Child male   | 24,978           | 10,341         | 327           | 1,151         | 383           | 37,180           |
| Hired child female | 4,406            | 1,349          | 43            | 569           | 8             | 6,375            |
| <b>Total</b>       | <b>2,044,557</b> | <b>558,715</b> | <b>49,991</b> | <b>42,992</b> | <b>28,209</b> | <b>2,724,464</b> |



**Table 33: Sector-wise Net Domestic Product at Constant (1993-94) Prices**

| Year                         | 1993-94          |                  | 1994-95          |                  | 1995-96          |                  | 1996-97          |                  | 1997-98          |                  | 1998-99          |                  |
|------------------------------|------------------|------------------|------------------|------------------|------------------|------------------|------------------|------------------|------------------|------------------|------------------|------------------|
| Description                  | Mumbai           | MMR              | Mumbai           | MMR              | Mumbai           | MMR              | Mumbai           | MMR              | Mumbai           | MMR              | Mumbai           | MMR              |
| Agriculture                  | 13,201           | 96,685           | 16,432           | 96,404           | 20,944           | 107,325          | 26,973           | 118,723          | 33,429           | 122,062          | 42,094           | 138,224          |
| Forestry & logging           | 0                | 8,878            | 0                | 6,445            | 0                | 2,865            | 0                | 5,686            | 0                | 6,356            | 0                | 9,645            |
| Fisheries                    | 18,915           | 27,881           | 15,569           | 26,104           | 21,270           | 41,661           | 27,242           | 45,215           | 16,645           | 34,276           | 16,524           | 30,825           |
| Mining & Quarrying           | 0                | 265              | 0                | 187              | 0                | 259              | 0                | 206              | 0                | 174              | 0                | 175              |
| <b>Primary Sector</b>        | <b>32,116</b>    | <b>133,709</b>   | <b>32,001</b>    | <b>129,140</b>   | <b>42,214</b>    | <b>152,110</b>   | <b>54,215</b>    | <b>169,830</b>   | <b>50,074</b>    | <b>162,868</b>   | <b>58,618</b>    | <b>178,869</b>   |
| Manufacturing                | 788,499          | 1,414,331        | 739,127          | 1,364,388        | 829,744          | 1,578,967        | 881,024          | 1,491,998        | 988,666          | 1,773,084        | 1,058,041        | 1,894,454        |
| Construction                 | 97,582           | 162,772          | 98,497           | 164,299          | 98,549           | 164,386          | 105,147          | 175,392          | 114,652          | 191,246          | 128,152          | 213,765          |
| Elect. Gas & Water supply    | 67,066           | 85,348           | 74,640           | 94,056           | 102,025          | 124,921          | 96,091           | 120,561          | 109,922          | 137,809          | 119,832          | 144,653          |
| <b>Secondary sector</b>      | <b>953,147</b>   | <b>1,662,451</b> | <b>912,264</b>   | <b>1,622,743</b> | <b>1,030,318</b> | <b>1,868,274</b> | <b>1,082,262</b> | <b>1,787,951</b> | <b>1,213,240</b> | <b>2,102,139</b> | <b>1,306,025</b> | <b>2,252,872</b> |
| Railway                      | 20,358           | 37,063           | 21,012           | 38,253           | 23,240           | 41,638           | 30,064           | 53,020           | 72,927           | 84,758           | 35,912           | 61,397           |
| Transport                    | 207,205          | 245,429          | 232,210          | 278,460          | 258,714          | 314,097          | 266,581          | 322,373          | 274,778          | 338,206          | 294,408          | 365,611          |
| Communication                | 68,952           | 98,097           | 80,561           | 114,717          | 95,846           | 136,606          | 118,049          | 168,403          | 135,821          | 193,868          | 159,668          | 228,062          |
| Trade , Hotel & Restaurant   | 371,626          | 513,178          | 379,672          | 524,289          | 457,613          | 631,918          | 494,313          | 682,597          | 547,451          | 755,976          | 611,339          | 844,198          |
| Banking & Insurance          | 549,277          | 741,755          | 562,914          | 760,171          | 615,661          | 831,402          | 565,175          | 763,224          | 640,166          | 864,493          | 666,951          | 900,667          |
| Real Estate , O.Dwelling,B/S | 117,119          | 159,433          | 122,750          | 166,777          | 130,471          | 176,905          | 138,651          | 187,608          | 145,890          | 196,889          | 154,063          | 207,541          |
| Public Adm.                  | 74,126           | 109,528          | 78,833           | 116,030          | 84,750           | 124,799          | 90,285           | 132,922          | 104,533          | 154,141          | 104,112          | 153,517          |
| Other services               | 138,781          | 194,267          | 143,447          | 199,241          | 153,497          | 212,424          | 167,086          | 230,469          | 162,223          | 225,251          | 200,029          | 276,592          |
| <b>Tertiary sector</b>       | <b>1,547,444</b> | <b>2,098,750</b> | <b>1,621,399</b> | <b>2,197,938</b> | <b>1,819,792</b> | <b>2,469,789</b> | <b>1,870,204</b> | <b>2,540,616</b> | <b>2,083,789</b> | <b>2,813,582</b> | <b>2,226,482</b> | <b>3,037,585</b> |
| <b>Total</b>                 | <b>2,532,707</b> | <b>3,894,910</b> | <b>2,565,664</b> | <b>3,949,821</b> | <b>2,892,324</b> | <b>4,490,173</b> | <b>3,006,681</b> | <b>4,498,397</b> | <b>3,347,103</b> | <b>5,078,589</b> | <b>3,591,125</b> | <b>5,469,326</b> |

**Note :** MMR covers Districts of Mumbai City, Mumbai Suburbs, Thane and Raigad.

**Source :** Government of Maharashtra: District Domestic product of Maharashtra 1993-94 to 1998-99 (Base Year 1993-94) , Mumbai 2001

**Observations :** 1. The share of net domestic product of Greater Mumbai in that of MMR has remained constant at 65% over the period 1993-94 to 1998-99

2. Contribution of a secondary and tertiary sector to the total NDP of MMR has remained constant at 57% and 73% respectively over the period 1993-94 to 1998-99.

